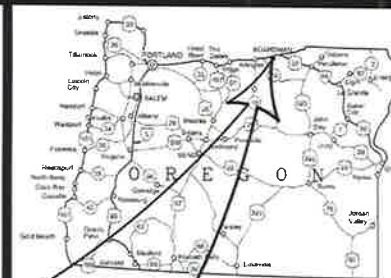


CITY OF BOARDMAN, OREGON LAUREL LANE AND LOOP ROAD IMPROVEMENTS 2021



INDEX

- 1 COVER
- 2 LEGEND AND GENERAL NOTES
- 3 SHEET INDEX AND SURVEY CONTROL

SEWER PIPING

- 3 'S' LINE - STA 'S'1+00 TO STA 'S'7+50
- 4 'S' LINE - STA 'S'7+50 TO STA 'S'14+09
- 5 'A' LINE - STA 'A'1+00 TO STA 'A'7+00
- 6 'A' LINE - STA 'A'7+00 TO STA 'A'13+50
- 7 'A' LINE - STA 'A'13+50 TO STA 'A'19+00
- 8 'A' LINE - STA 'A'19+00 TO STA 'A'24+50
- 9 'B' LINE - STA 'B'1+00 TO STA 'B'6+66
- 10 'C' LINE - STA 'C'16+82 TO STA 'C'21+81
- 11 'D' LINE - STA 'D'1+25 TO STA 'D'3+50
- 12 MISCELLANEOUS DETAILS

ROADWAY

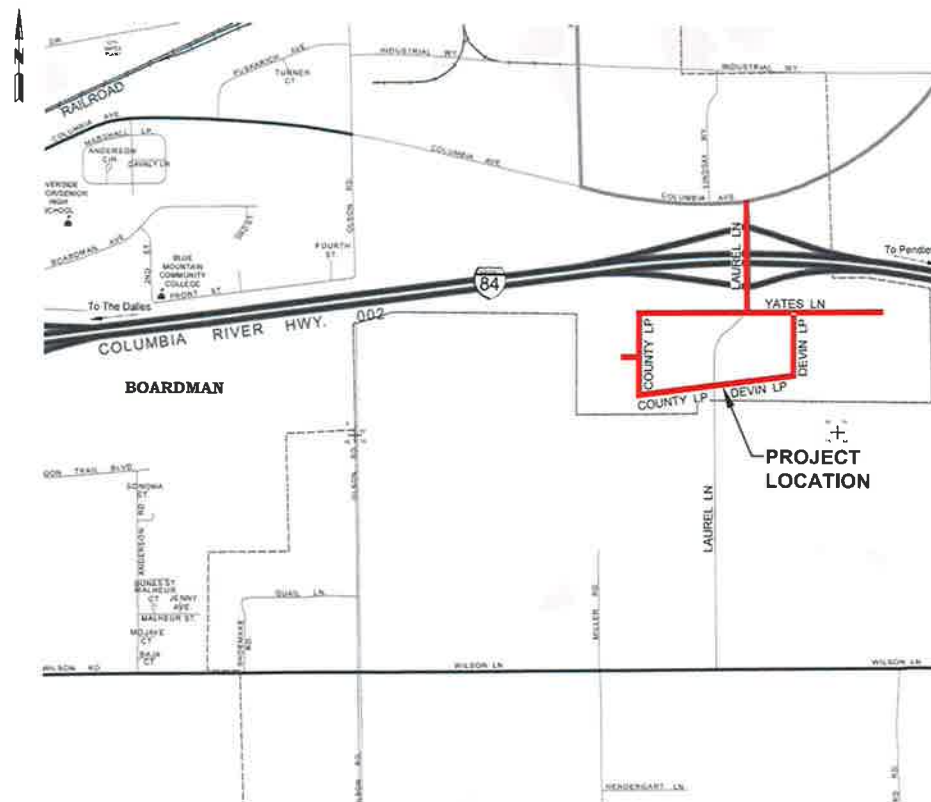
- 13 'A' LINE - STA 'A'0+60 TO STA 'A'7+00
- 14 'A' LINE - STA 'A'7+00 TO STA 'A'13+50
- 15 'A' LINE - STA 'A'13+50 TO STA 'A'19+00
- 16 'A' LINE - STA 'A'19+00 TO STA 'A'24+50
- 17 'B' LINE - STA 'B'1+00 TO STA 'B'5+50
- 18 'B' LINE - STA 'B'5+50 TO STA 'B'9+75
- 19 'C' LINE - STA 'C'1+35 TO STA 'C'9+00
- 20 'C' LINE - STA 'C'9+00 TO STA 'C'15+75
- 21 'C' LINE - STA 'C'15+75 TO STA 'C'21+82
- 22 'D' LINE - STA 'D'1+60 TO STA 'D'3+50
- 23 TYPICAL SECTION
- 24 INTERSECTION DETAILS I
- 25 INTERSECTION DETAILS II
- 26 INTERSECTION DETAILS III
- 27 MISCELLANEOUS DETAILS

SIGNING AND STRIPING

- 28 'A' LINE - STA 'A'1+00 TO STA 'A'13+50
- 29 'A' LINE - STA 'A'13+50 TO STA 'A'24+50
- 30 'B' LINE - STA 'B'1+00 TO STA 'B'9+75 - STA 'D'1+25 TO STA 'D'3+50
- 31 'C' LINE - STA 'C'1+00 TO STA 'C'15+50
- 32 'C' LINE - STA 'C'15+50 TO STA 'C'21+82

CITY STANDARD DRAWINGS

- S1 STANDARD PRECAST MANHOLE
- S2 MANHOLE BASE/CONSTRUCTION NOTES
- S3 DROP PRECAST MANHOLE
- S4 SEWER CLEANOUTS
- S5 MANHOLE AND CLEANOUT CONCRETE COLLAR DETAILS
- S6 SEWER SERVICE LINE
- S7 WATER-SEWER CROSSING
- ST1 TRENCH EXCAVATION AND BACKFILL
- ST2 TRENCH RESTORATION GRAVEL AND PAVEMENT AREAS
- ST3 TRENCH RESTORATION LAWNS AND NATURAL AREAS
- ST13 MONUMENT BOX
- W5 VALVE CONCRETE COLLAR DETAILS
- W6 FIRE HYDRANT AND AUXILIARY VALVE DETAIL
- W10 WATER AIR RELEASE VALVE



VICINITY MAP
N.T.S.



CITY COUNCIL

PAUL KEEFER, Mayor
ROY DRAGO, JR.
PAUL BEAGLE
BRENDA PROFFIT
KATY NORTON
LESLIE PIERSON
ISAAC WILLIAMS

CITY OFFICIALS

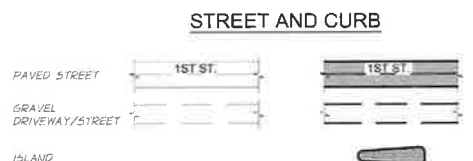
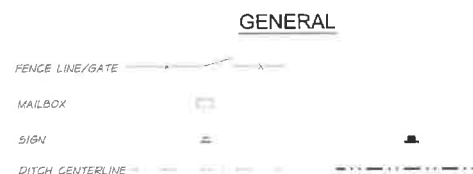
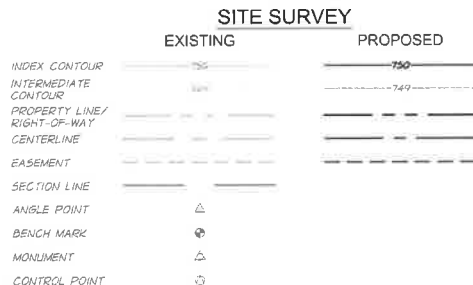
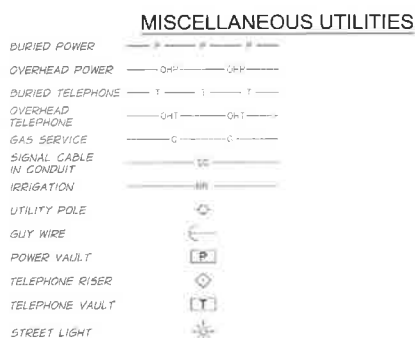
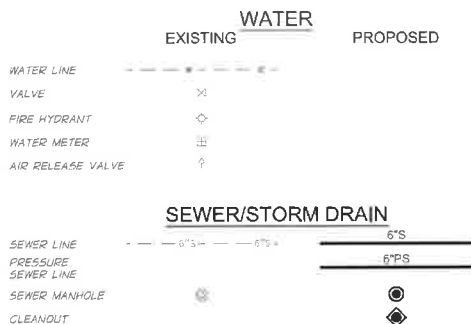
KAREN PETTIGREW, City Manager
KEVIN KENNEDY, Public Works Director
BARRY BEYELER, Community Development Director



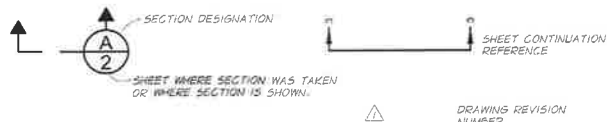
manderson
perry
& associates, inc.

1901 N. Ft. Stevens, La Grange, OR 97030 PH: (541) 883-4000 FAX: (541) 883-5456
LA GRANGE, OR WALLY WALLACE, KEN KENNEDY, HERMISTON, OR
COPYRIGHT 2021 BY ANDERSON PERRY & ASSOCIATES, INC.

PLAN LEGEND



DRAFTING



EARTHWORK QUANTITIES

BASE BID CUT	5,870 C.Y.
BASE BID FILL	1,020 C.Y.
ADDITIVE ALTERNATIVE CUT	4,770 C.Y.
ADDITIVE ALTERNATIVE FILL	640 C.Y.

- NOTES**
- THE QUANTITIES SHOWN ABOVE ARE GENERAL IN-PLACE ESTIMATES AND ARE SHOWN ONLY FOR THE CONVENIENCE OF THE CONTRACTOR. ACTUAL QUANTITIES MAY VARY FROM THOSE SHOWN. THE CONTRACTOR SHALL MAKE THEIR OWN DETERMINATION AS TO THE ACTUAL QUANTITIES OF EARTHWORK REQUIRED TO COMPLETE THE WORK AS SHOWN. SEE SPECIAL PROVISIONS.
 - QUANTITIES SHOWN INCLUDE EXCAVATION AND BACKFILL OF GENERAL EMBANKMENT ONLY.

GENERAL CONSTRUCTION NOTES

- INFORMATION SHOWN ON THE PLANS ARE SCHEMATIC IN NATURE. THE RELATIVE LOCATION OF EXISTING FEATURES ARE APPROXIMATE ONLY AND IT SHOULD BE NOTED THAT SOME DISCREPANCIES AND OMISSIONS IN LOCATION, TYPE, AND SIZE WILL OCCUR. THE EXACT LOCATION OF EXISTING FEATURES WILL REQUIRE FIELD VERIFICATION IN AREAS WHERE CONFLICT MAY OCCUR. FEATURES SHOWN ARE FOR THE CONVENIENCE OF THE CONTRACTOR. THIS VERIFICATION WORK SHALL BE PERFORMED PRIOR TO PERFORMING ANY NEW WORK TO ENSURE THAT CONFLICTS WITH THE EXISTING FEATURES DO NOT OCCUR. ADJUSTMENTS TO THE LOCATION OF THE NEW IMPROVEMENTS OR RELOCATION OF EXISTING FEATURES MAY BE NECESSARY TO PREVENT CONFLICTS. ALL ADJUSTMENTS SHALL BE REVIEWED AND APPROVED BY THE ENGINEER. THIS WORK SHALL BE CONSIDERED INCIDENTAL AND NO ADDITIONAL PAYMENT WILL BE MADE.
- ANY CONSTRUCTION STAKING NOT PROVIDED BY THE ENGINEER AND NEEDED BY THE CONTRACTOR TO COMPLETE THE IMPROVEMENTS AS SHOWN WILL BE THE RESPONSIBILITY OF THE CONTRACTOR TO PROVIDE. SEE "CONSTRUCTION STAKING" SECTION OF GENERAL REQUIREMENTS FOR ADDITIONAL INFORMATION.
- THE CONTRACTOR SHALL BE RESPONSIBLE FOR THE ACTUAL LOCATION AND PROTECTION OF EXISTING UTILITIES. PRIOR TO THE COMMENCEMENT OF WORK, THE CONTRACTOR SHALL CONTACT EXISTING UTILITY COMPANIES FOR LOCATION OF ALL UTILITIES AFFECTED BY THE WORK. THE CONTRACTOR SHALL UTILIZE THE ONE CALL UTILITY NOTIFICATION CENTER AT 1-800-392-2344 OR 811.
- THESE PLANS, SPECIFICATIONS, AND REFERENCED DOCUMENTS SHALL BE USED TO CONSTRUCT THE IMPROVEMENTS SHOWN. REFERENCED DOCUMENTS INCLUDE THE OREGON STANDARD SPECIFICATIONS FOR CONSTRUCTION (CURRENT EDITION), OREGON STANDARD DRAWINGS, AND THE MANUAL ON UNIFORM TRAFFIC CONTROL DEVICES (MUTCD).
- ALL EXISTING UTILITIES SHOWN ON THE PLANS ARE SHOWN WITH AS MUCH ACCURACY AS POSSIBLE BASED ON THE AVAILABLE INFORMATION. SOME DISCREPANCIES AND OMISSIONS IN LOCATION, TYPE, AND SIZE SHOULD BE EXPECTED TO OCCUR. THE CONTRACTOR SHALL BE RESPONSIBLE FOR LOCATING AND PROTECTING ALL EXISTING PUBLIC AND PRIVATE UTILITIES IN AND AROUND THE WORK AREA. ANY DISCREPANCIES BETWEEN THE PLANS AND THE EXISTING CONDITIONS SHALL BE REPORTED TO THE ENGINEER.
- SAW CUT ALL EXISTING ASPHALT AND CONCRETE WHERE JOINTS WITH NEW CONSTRUCTION WILL OCCUR.
- THE CONTRACTOR SHALL KEEP THE SITE IN A NEAT AND ORDERLY CONDITION. ALL WASTE GENERATED BY THE CONTRACTOR'S OPERATION SHALL BE PICKED UP AT THE END OF EACH DAY. EQUIPMENT, VEHICLES, AND MATERIALS SHALL BE STAGED EITHER OFF SITE OR ALONG CLOSED PORTIONS OF THE PROJECT AREA.
- PROTECT AND AVOID DAMAGE TO ALL PROPERTY OUTSIDE THE PUBLIC RIGHT-OF-WAY AND RESTORE ALL DISTURBED AREAS TO EQUAL OR BETTER THAN THE ORIGINAL CONDITION. SURFACE RESTORATION WORK TO BE PERFORMED IS TO INCLUDE NATURAL SURFACE RESTORATION AND GRAVEL RESYSTORATION, AND IS NOT SPECIFICALLY CALLED OUT ON THE PLANS. THE INTENT IS TO RESTORE ALL AREAS ADJACENT TO THE WORK AREA TO AN EQUIVALENT OR BETTER CONDITION THAN EXISTED PRIOR TO CONSTRUCTION. THE CONTRACTOR SHALL PERFORM ALL SURFACE RESTORATION WORK AS REQUIRED TO PROVIDE SMOOTH TRANSITIONS FROM THE NEW CONSTRUCTION TO EXISTING GRADE WITH SLOPES 1V:3H OR FLATTER. SURFACE RESTORATION WORK SHALL BE CONSIDERED INCIDENTAL AND NO ADDITIONAL PAYMENT WILL BE MADE.

TRAFFIC CONTROL NOTES

- CONTRACTOR SHALL PREPARE AND SUBMIT A WORK AREA TRAFFIC CONTROL PLAN(S) FOR CONSTRUCTION OF WORK IMMEDIATELY ADJACENT TO THE EXISTING STREETS FOR REVIEW AND APPROVAL. MAINTAIN 2-WAY TRAFFIC AND UTILIZE OREGON STANDARD TRAFFIC CONTROL DEVICES. CONTRACTOR SHALL UTILIZE OREGON STANDARD DRAWINGS MEETING MUTCD REQUIREMENTS.
- INSTALL PROJECT PERIMETER TEMPORARY SIGNING AS REQUIRED. ADDITIONAL TRAFFIC CONTROL WILL BE NECESSARY DEPENDING ON CONTRACTOR'S STAGING DURING CONSTRUCTION.
- MOVING TEMPORARY TRAFFIC CONTROL DEVICES AND SIGNS WITHIN THE PROJECT AREA IS INCIDENTAL TO THE TEMPORARY PROTECTION AND DIRECTION OF TRAFFIC.
- EXISTING SIGNS THAT CONFLICT WITH CONSTRUCTION SIGNING ARE TO BE COVERED OR REMOVED AND REINSTALLED DURING AND AFTER CONSTRUCTION AS NECESSARY.
- ACCESS TO EXISTING DRIVEWAYS SHALL BE MAINTAINED DURING CONSTRUCTION TO THE FULLEST EXTENT POSSIBLE. COORDINATE ANY NECESSARY DRIVEWAY CLOSURES WITH PROPERTY OWNERS/RESIDENTS. INCLUDE A DETAILED PLAN FOR THE NOTIFICATION OF RESIDENTS REGARDING CLOSURE OF DRIVEWAYS IN THE TRAFFIC CONTROL PLAN.



DESIGNED BY M. LEESE	DATE 4/30/2021
DRAWN BY E. WILLIAMS	DATE 4/30/2021
CHECKED BY A. LINDSEY	DATE 4/30/2021



CITY OF BOARDMAN
LAUREL LANE AND LOOP ROAD IMPROVEMENTS

LEGEND AND GENERAL NOTES

SHEET

1

APA CONTROL POINTS				
NO.	NORTHING	EASTING	ELEVATION	DESCRIPTION
225	793065.52	8413224.89	347.960	MON_LR
226	793117.18	8415494.57	326.262	MON_YPC
227	793087.20	8415495.70	326.350	MON_YPC
228	793053.27	8415018.28	325.601	MON_YPC
229	793050.65	8414718.24	326.337	MON_YPC
230	793047.30	8414336.93	328.196	MON_YPC
231	793071.62	8413697.25	335.426	MON_BC
232	792465.60	8413252.22	342.360	MON_YPC
233	792466.15	8413332.21	341.641	MON_YPC
234	792523.49	8413244.66	341.638	MON_OPC
235	792604.84	8413242.01	341.180	MON_OPC
236	793234.87	8411087.61	328.496	MON_ALCAP
617	793054.24	8413224.97	348.451	APA_RPC
618	794407.03	8414882.02	319.168	APA_RPC
619	794318.04	8413919.57	291.562	APA_MAGSPKE
620	793115.14	8414082.92	328.082	APA_H-MAG
621	793457.32	8414023.71	311.776	APA_H-MAG

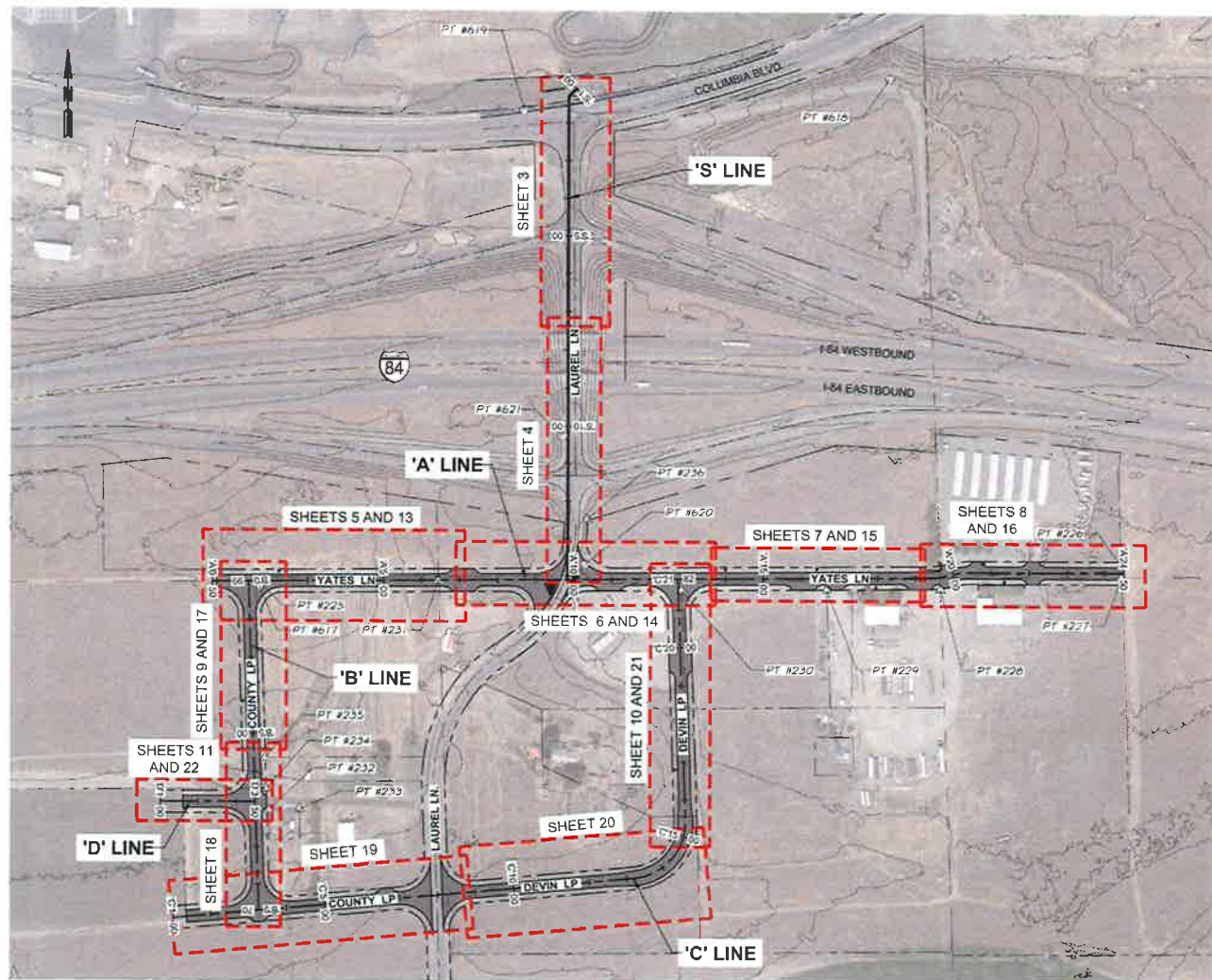
SURVEY ACTIVITIES - GENERAL

THIS SITE IS LOCATED IN THE SE 1/4 OF SEC 10 & SW 1/4 OF SEC 11, T.4N., R.25E., OF THE WILLAMETTE MERIDIAN, MORROW COUNTY, OREGON. A TOPOGRAPHIC FIELD SURVEY WAS CONDUCTED AT THE SITE ON MARCH 14-15, 2016 (UD 439-45 WATER SYSTEM IMPROVEMENTS) AND INCLUDED STATIC GPS OBSERVATIONS. ADDITIONAL DATA WAS GATHERED DEC. 18-19, 2020. LIDAR DATA WAS USED TO SUPPLEMENT TERRAIN DATA. GENERAL SITE LOCATION BASED ON GOOGLE EARTH: 45°50'26.01"N, 119°40'6.07"W.

SURVEY DATUMS

VERTICAL: ELEVATIONS SHOWN ARE A REPRESENTATION OF NAVD83 (GEOID112B) BASED ON AN OPUS SOLUTION DERIVED FROM A STATIC GPS TIE AT APA CONTROL POINT #617.

HORIZONTAL: THE COORDINATES OF APA CONTROL POINT #617 REPRESENT THE OREGON STATE PLANE COORDINATE SYSTEM - NORTH ZONE (NAD 83(2011)), AS DETERMINED BY SAID STATIC GPS TIE AND SAID OPUS SOLUTION. BEARINGS SHOWN ARE GRID BEARINGS. DISTANCES AND COORDINATES OF OTHER POINTS AT THE SITE ARE BASED ON GRID MEASUREMENT.



DESIGNED BY	M. LEES	DATE	12/11/2019
CHECKED BY	L. WHITE	DATE	12/11/2019
REVIEWED BY	A. LINDSEY	DATE	12/11/2019
PROJECT NO.	439-65-0600-100NDX.dwg	DATE	12/11/2019
PROJECT NAME	LAUREL LANE AND LOOP ROAD IMPROVEMENTS	DATE	12/11/2019
PROJECT LOCATION	CITY OF BOARDMAN, OREGON	DATE	12/11/2019
PROJECT SCALE	1"=40'	DATE	12/11/2019
PROJECT STATUS	FOR REVIEW	DATE	12/11/2019
PROJECT COMMENTS	COPYRIGHT 2021 BY ANDERSON PERRY & ASSOC., INC.		



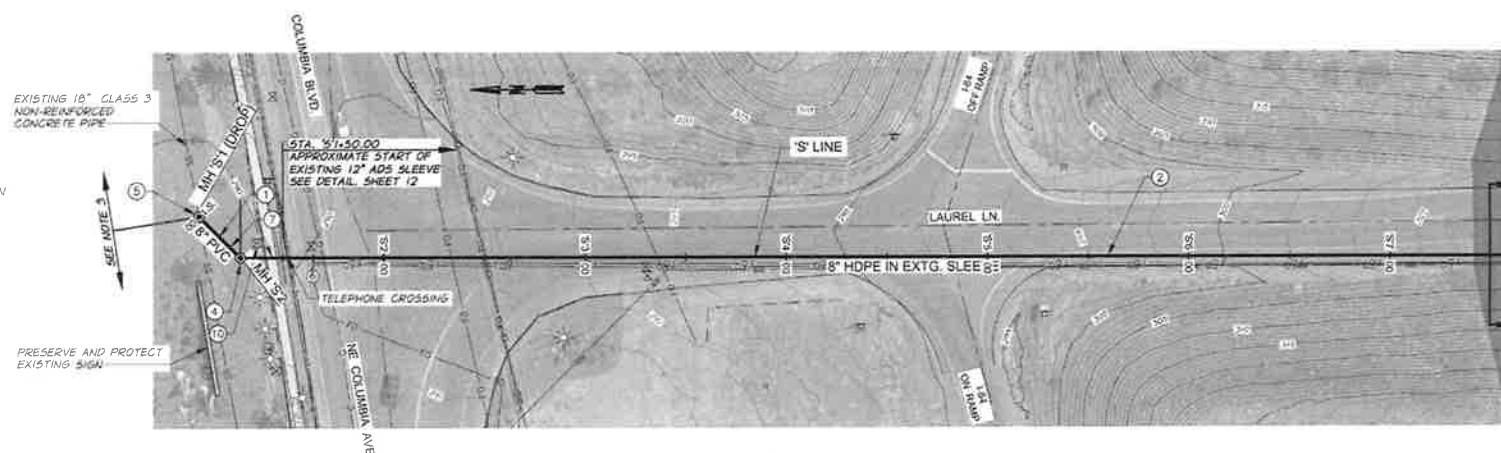
CITY OF BOARDMAN
LAUREL LANE AND LOOP ROAD IMPROVEMENTS

SHEET INDEX AND SURVEY CONTROL

2

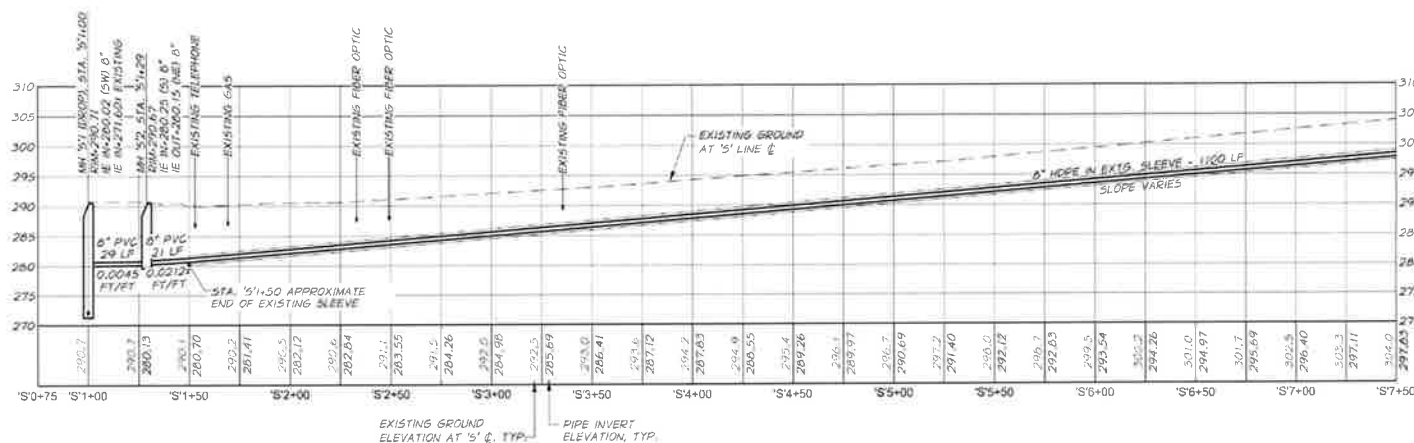
WORK ITEM SCHEDULE

1. INSTALL 8" PVC SEWER LINE AT THE GRADE SHOWN SEE CITY STANDARD DETAIL 5T1
2. INSTALL 8" SEWER IN THE EXISTING 12" ADS SLEEVE. SEE DETAIL, SHEET 12
3. RESERVED
4. INSTALL SEWER MANHOLE SEE CITY STANDARD DETAIL 5T1
5. CONNECT EXISTING SEWER WITH FITTING AS REQUIRED TO NEW MANHOLE. CONTRACTOR TO VERIFY EXISTING PIPE ELEVATION
6. RESERVED
7. RESTORE LANDSCAPE, SIDEWALK, ASPHALT, AND CURB AND GUTTER BETWEEN APPROX. STA. 5'1+00 TO STA. 5'1+50 TO EQUAL OR BETTER THAN EXISTING CONDITION.
8. ASPHALT SURFACE RESTORATION AS REQUIRED FOR MANHOLE AND SEWER INSTALLATION SEE CITY STANDARD DETAIL 5T2
9. RESERVED
10. PRESERVE AND PROTECT EXISTING UTILITY OR SEE ROADWAY DRAWINGS WORK ITEM SCHEDULE.
11. EXISTING SURVEY MONUMENT SEE THE GENERAL REQUIREMENTS FOR INSTRUCTION.
12. REMOVE EXISTING SIGN AND DELIVER TO OWNER.
13. INSTALL SEWER SERVICE LOCATION AS DETERMINED BY THE ENGINEER. SEE CITY STANDARD DETAILS 54 AND 56.



NOTES

1. CONTRACTOR SHALL PRESERVE AND PROTECT EXISTING UTILITIES EXPOSED DURING TRENCH EXCAVATION AND BACKFILL AS REQUIRED.
2. ELEVATION OF EXISTING UTILITY SHOWN IS APPROXIMATE. POTHOLE AND VERIFY EXISTING UTILITY ELEVATION AND NOTIFY ENGINEER OF ANY POTENTIAL CONFLICTS.
3. APPROXIMATELY 230 FEET TO UPSTREAM MANHOLE AND 520 FEET TO DOWNSTREAM MANHOLE FOR BYPASS PUMPING WHEN MAKING CONNECTION TO EXISTING SEWER.



DESIGNED BY: M. LEES	DATE: 4/19/2021
DRAWN BY: L. WILHITE	CHECKED BY: A. LINDSEY
PROJECT: 439-65-68	DATE: 4/19/2021
FILE: 439-65-060C-121UT_SLINE.dwg	PROJECT: 439-65-68
COPYRIGHT 2021 BY ANDERSON PERRY & ASSOC., INC.	



CITY OF BOARDMAN
LAUREL LANE AND LOOP ROAD IMPROVEMENTS

SEWER PIPING
'S' LINE - STA. 'S'1+00 TO STA. 'S'7+50

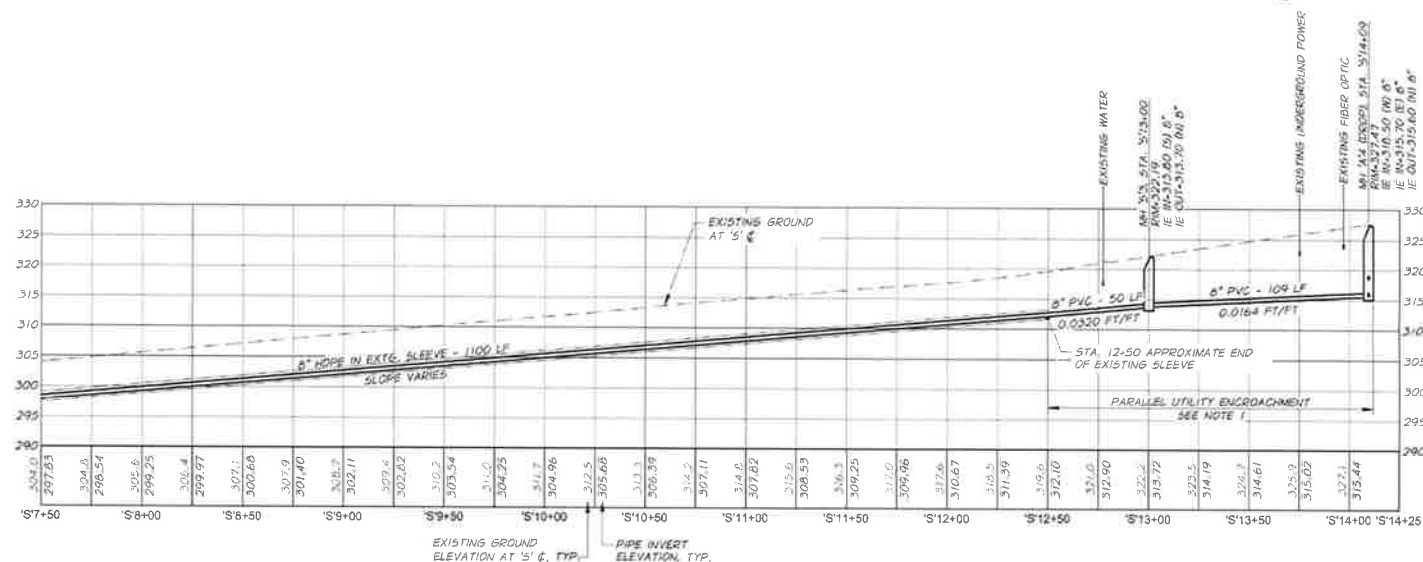
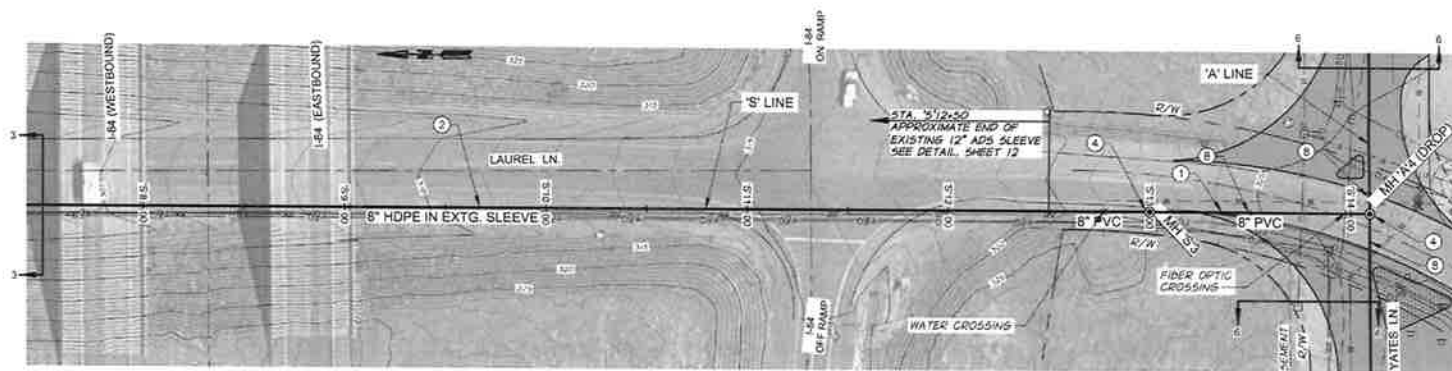
3

WORK ITEM SCHEDULE

1. INSTALL 8" PVC SEWER LINE AT THE GRADE SHOWN SEE CITY STANDARD DETAIL 511
2. INSTALL 8" SEWER IN THE EXISTING 12" ADS SLEEVE, SEE DETAIL, SHEET 12
3. RESERVED
4. INSTALL SEWER MANHOLE SEE CITY STANDARD DETAIL 51
5. CONNECT EXISTING SEWER WITH FITTING AS REQUIRED TO NEW MANHOLE. CONTRACTOR TO VERIFY EXISTING PIPE ELEVATION
6. RESERVED
7. RESTORE LANDSCAPE, SIDEWALK, ASPHALT, AND CURB AND GUTTER BETWEEN APPROX. STA. '51+00 TO STA. '51+50 TO EQUAL OR BETTER THAN EXISTING CONDITION.
8. ASPHALT SURFACE RESTORATION AS REQUIRED FOR MANHOLE AND SEWER INSTALLATION SEE CITY STANDARD DETAIL 512
9. RESERVED
10. PRESERVE AND PROTECT EXISTING UTILITY OR SEE ROADWAY DRAWINGS WORK ITEM SCHEDULE.
11. EXISTING SURVEY MONUMENT SEE THE GENERAL REQUIREMENTS FOR INSTRUCTION.
12. REMOVE EXISTING SIGN AND DELIVER TO OWNER.
13. INSTALL SEWER SERVICE, LOCATION AS DETERMINED BY THE ENGINEER. SEE CITY STANDARD DETAILS 54 AND 56

NOTES

1. CONTRACTOR SHALL PRESERVE AND PROTECT EXISTING UTILITIES EXPOSED DURING TRENCH EXCAVATION AND BACKFILL AS REQUIRED.
2. ELEVATION OF EXISTING UTILITY SHOWN IS APPROXIMATE. POTHOLE AND VERIFY EXISTING UTILITY ELEVATION AND NOTIFY ENGINEER OF ANY POTENTIAL CONFLICTS.
3. APPROXIMATELY 230 FEET TO UPSTREAM MANHOLE AND 520 FEET TO DOWNSTREAM MANHOLE FOR BYPASS PUMPING WHEN MAKING CONNECTION TO EXISTING SEWER.



DESIGNED BY M. LEES	DATE 2021
DRAWN BY L. WELMITE	PROJECT 439-65-68
CHECKED BY A. LINDSEY	DATE 2021
	PROJECT 439-65-060C-122UT_SLINE.dwg
	COPYRIGHT 2021 BY ANDERSON PERRY & ASSOC., INC.



CITY OF BOARDMAN
LAUREL LANE AND LOOP ROAD IMPROVEMENTS

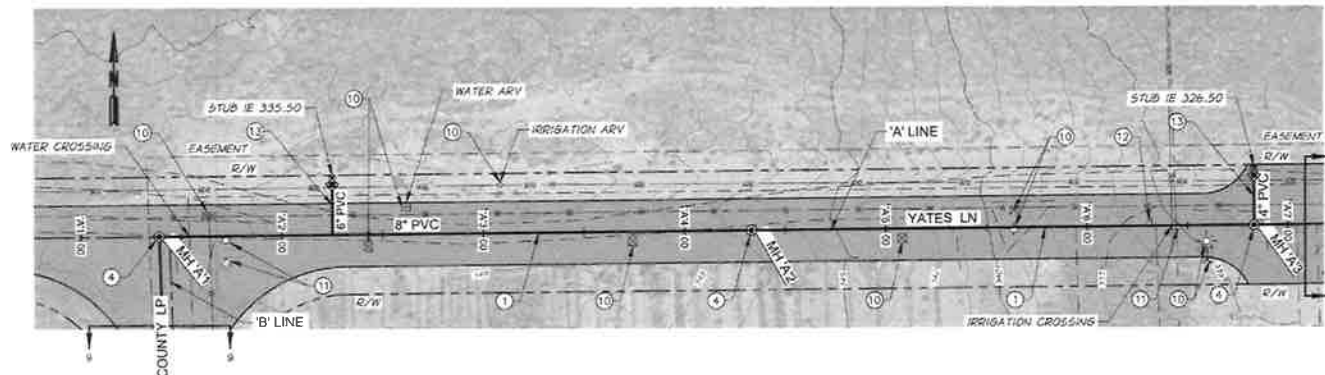
SEWER PIPING
'S' LINE - STA. '51+50 TO STA. '51+40

SHEET

4

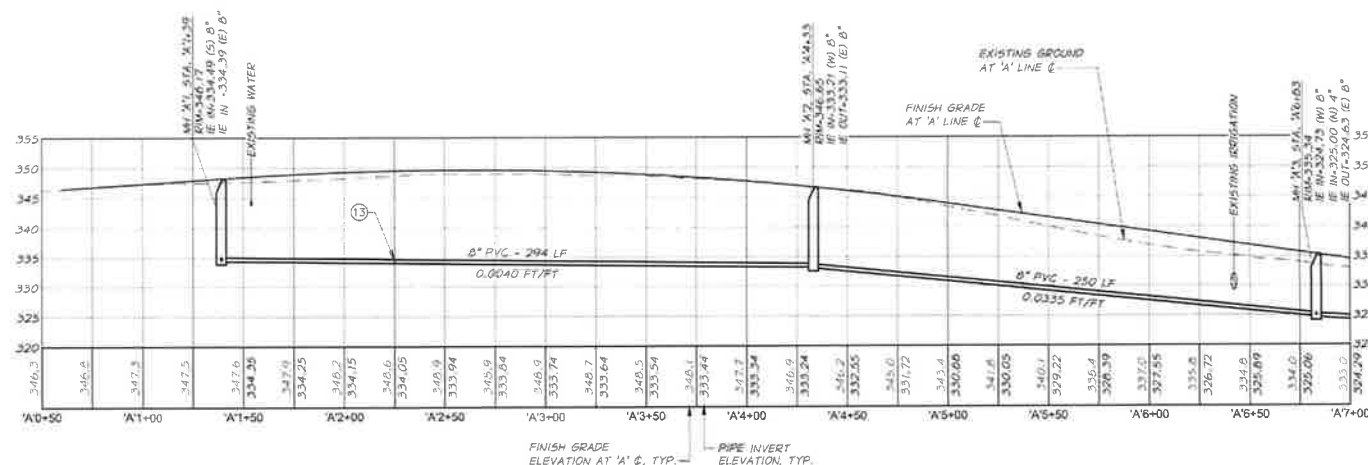
WORK ITEM SCHEDULE

- ① INSTALL 8" PVC SEWER LINE AT THE GRADE SHOWN SEE CITY STANDARD DETAIL 5T1
- ② INSTALL 8" SEWER IN THE EXISTING 12" ADS SLEEVE, SEE DETAIL, SHEET 12
- ③ RESERVED
- ④ INSTALL SEWER MANHOLE SEE CITY STANDARD DETAIL 51
- ⑤ CONNECT EXISTING SEWER WITH FITTING AS REQUIRED TO NEW MANHOLE, CONTRACTOR TO VERIFY EXISTING PIPE ELEVATION
- ⑥ RESERVED
- ⑦ RESTORE LANDSCAPE, SIDEWALK, ASPHALT, AND CURB AND GUTTER BETWEEN APPROX. STA. 51+00 TO STA. 51+50 TO EQUAL OR BETTER THAN EXISTING CONDITION.
- ⑧ ASPHALT SURFACE RESTORATION AS REQUIRED FOR MANHOLE AND SEWER INSTALLATION SEE CITY STANDARD DETAIL 5T2
- ⑨ RESERVED
- ⑩ PRESERVE AND PROTECT EXISTING UTILITY OR SEE ROADWAY DRAWINGS WORK ITEM SCHEDULE.
- ⑪ EXISTING SURVEY MONUMENT SEE THE GENERAL REQUIREMENTS FOR INSTRUCTION.
- ⑫ REMOVE EXISTING SIGN AND DELIVER TO OWNER.
- ⑬ INSTALL SEWER SERVICE, LOCATION AS DETERMINED BY THE ENGINEER. SEE CITY STANDARD DETAILS 54 AND 56



NOTES

1. CONTRACTOR SHALL PRESERVE AND PROTECT EXISTING UTILITIES EXPOSED DURING TRENCH EXCAVATION AND BACKFILL AS REQUIRED.
2. ELEVATION OF EXISTING UTILITY SHOWN IS APPROXIMATE. POTHOLE AND VERIFY EXISTING UTILITY ELEVATION AND NOTIFY ENGINEER OF ANY POTENTIAL CONFLICTS.
3. APPROXIMATELY 250 FEET TO UPSTREAM MANHOLE AND 320 FEET TO DOWNSTREAM MANHOLE FOR BYPASS PUMPING WHEN MAKING CONNECTION TO EXISTING SEWER.



DESIGNED BY: M. LEIS	DATE: 4/30/2021
CHECKED BY: L. WILLIAMS	DATE: 4/30/2021
REVIEWED BY: A. LINDSEY	DATE: 4/30/2021



CITY OF BOARDMAN
LAUREL LANE AND LOOP ROAD IMPROVEMENTS

SEWER PIPING
'A' LINE - STA. 'A'1+00 TO STA. 'A'7+00

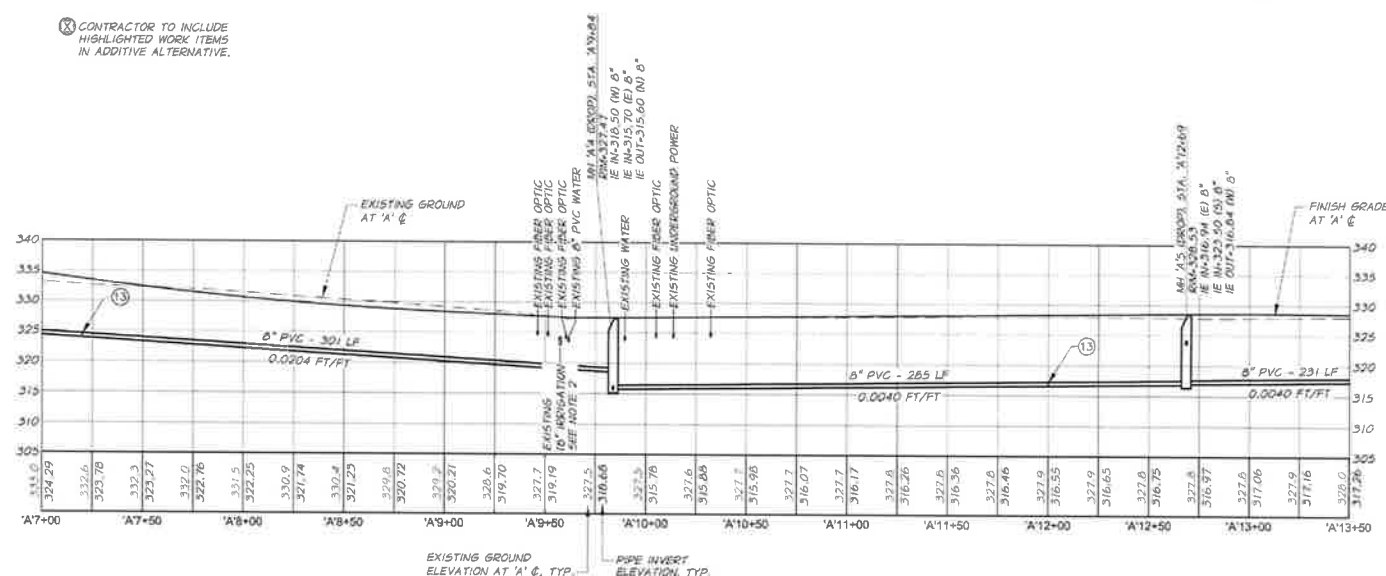
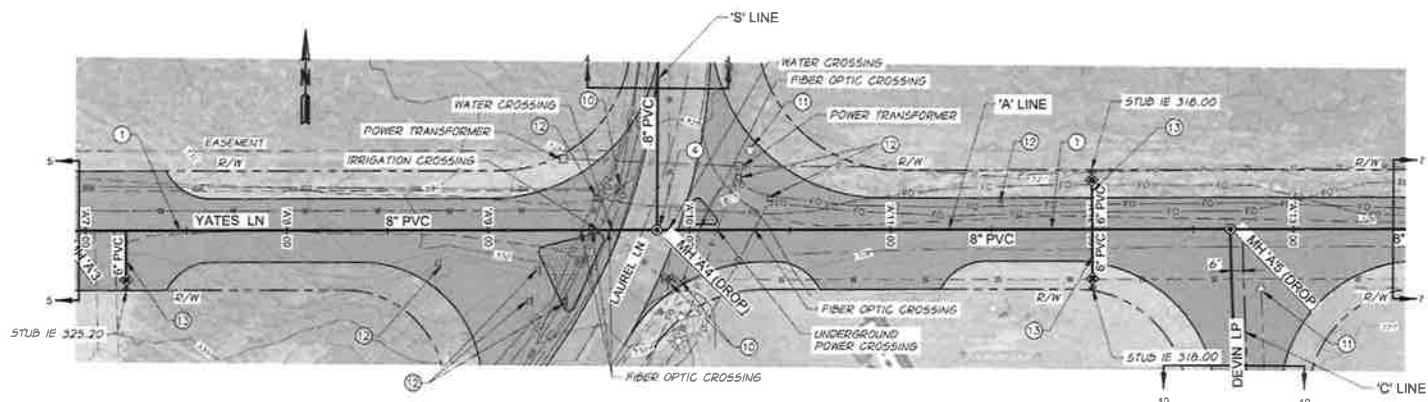
SHEET

5

WORK ITEM SCHEDULE

1. INSTALL 8" PVC SEWER LINE AT THE GRADE SHOWN SEE CITY STANDARD DETAIL 51
2. INSTALL 8" SEWER IN THE EXISTING 12" ADS SLEEVE, SEE DETAIL, SHEET 12
3. RESERVED
4. INSTALL SEWER MANHOLE SEE CITY STANDARD DETAIL 51
5. CONNECT EXISTING SEWER WITH FITTING AS REQUIRED TO NEW MANHOLE. CONTRACTOR TO VERIFY EXISTING PIPE ELEVATION
6. RESERVED
7. RESTORE LANDSCAPE, SIDEWALK, ASPHALT, AND CURB AND GUTTER BETWEEN APPROX. STA. 'S1+00 TO STA. 'S1+50 TO EQUAL OR BETTER THAN EXISTING CONDITION.
8. ASPHALT SURFACE RESTORATION AS REQUIRED FOR MANHOLE AND SEWER INSTALLATION SEE CITY STANDARD DETAIL 512
9. RESERVED
10. PRESERVE AND PROTECT EXISTING UTILITY OR SEE ROADWAY DRAWINGS WORK ITEM SCHEDULE.
11. EXISTING SURVEY MONUMENT SEE THE GENERAL REQUIREMENTS FOR INSTRUCTION.
12. REMOVE EXISTING SIGN AND DELIVER TO OWNER.
13. INSTALL SEWER SERVICE, LOCATION AS DETERMINED BY THE ENGINEER. SEE CITY STANDARD DETAILS 54 AND 56

14. CONTRACTOR TO INCLUDE HIGHLIGHTED WORK ITEMS IN ADDITIVE ALTERNATIVE.



NOTES

1. CONTRACTOR SHALL PRESERVE AND PROTECT EXISTING UTILITIES EXPOSED DURING TRENCH EXCAVATION AND BACKFILL AS REQUIRED.
2. ELEVATION OF EXISTING UTILITY SHOWN IS APPROXIMATE. POTHOLE AND VERIFY EXISTING UTILITY ELEVATION AND NOTIFY ENGINEER OF ANY POTENTIAL CONFLICTS.
3. APPROXIMATELY 230 FEET TO UPSTREAM MANHOLE AND 520 FEET TO DOWNSTREAM MANHOLE FOR BYPASS PUMPING WHEN MAKING CONNECTION TO EXISTING SEWER.



DESIGNED BY: M. LEE	DATE: 12-11-21	PROJECT: 439-65/68	DATE: 2021
DRAWN BY: L. WILLIAMS		PROJECT: 439-65-DBOC-124UT_ALINE.dwg	
CHECKED BY: A. LINDSEY		COPYRIGHT 2021 BY ANDERSON PERRY & ASSOC., INC.	



CITY OF BOARDMAN
LAUREL LANE AND LOOP ROAD IMPROVEMENTS

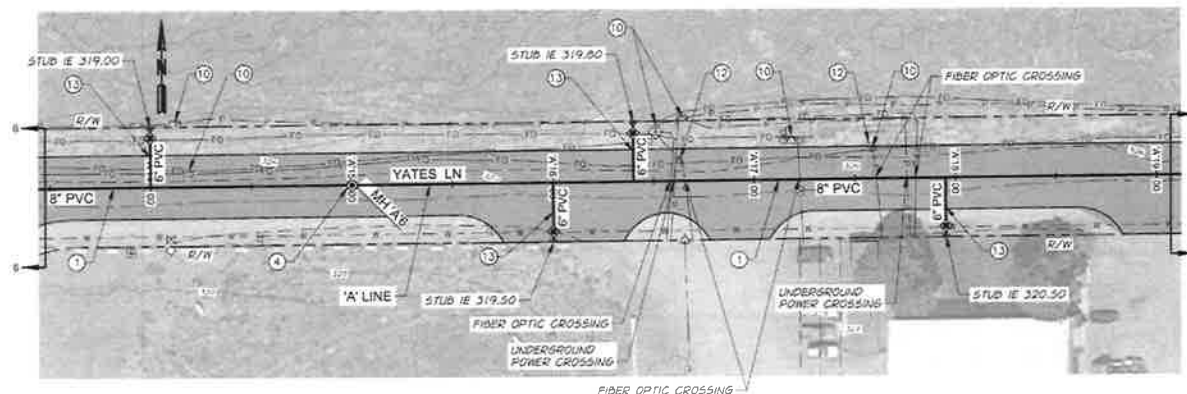
SEWER PIPING
'A' LINE - STA. 'A7+00 TO STA. 'A13+50

SHEET

6

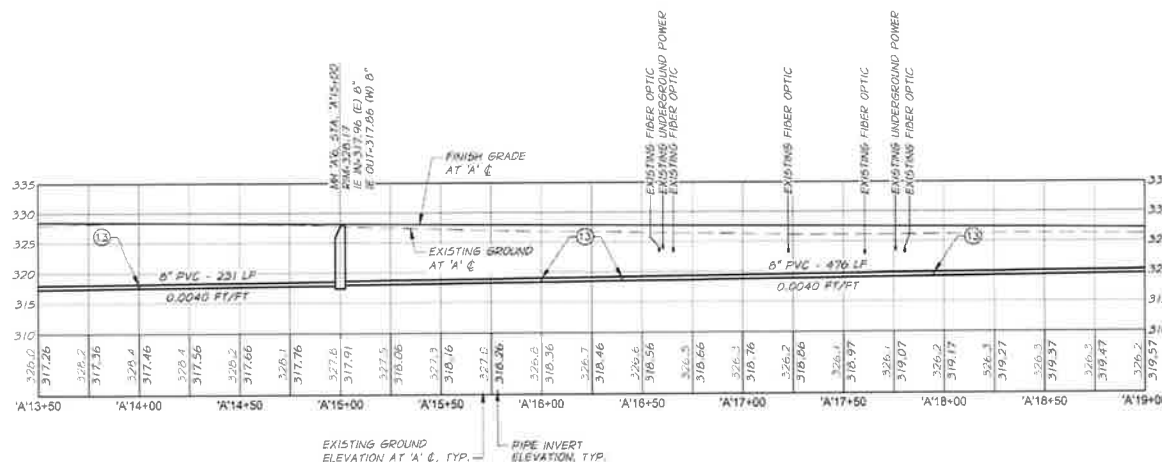
WORK ITEM SCHEDULE

1. INSTALL 8" PVC SEWER LINE AT THE GRADE SHOWN SEE CITY STANDARD DETAIL 5T1
2. INSTALL 8" SEWER IN THE EXISTING 12" ADS SLEEVE, SEE DETAIL SHEET 12
3. RESERVED
4. INSTALL SEWER MANHOLE SEE CITY STANDARD DETAIL 51
5. CONNECT EXISTING SEWER WITH FITTING AS REQUIRED TO NEW MANHOLE, CONTRACTOR TO VERIFY EXISTING PIPE ELEVATION
6. RESERVED
7. RESTORE LANDSCAPE, SIDEWALK, ASPHALT, AND CURB AND GUTTER BETWEEN APPROX. STA. 51+00 TO STA. 51+50 TO EQUAL OR BETTER THAN EXISTING CONDITION.
8. ASPHALT SURFACE RESTORATION AS REQUIRED FOR MANHOLE AND SEWER INSTALLATION SEE CITY STANDARD DETAIL 5T2
9. RESERVED
10. PRESERVE AND PROTECT EXISTING UTILITY OR SEE ROADWAY DRAWINGS WORK ITEM SCHEDULE.
11. EXISTING SURVEY MONUMENT SEE THE GENERAL REQUIREMENTS FOR INSTRUCTION.
12. REMOVE EXISTING SIGN AND DELIVER TO OWNER.
13. INSTALL SEWER SERVICE, LOCATION AS DETERMINED BY THE ENGINEER. SEE CITY STANDARD DETAILS 54 AND 56



NOTES

1. CONTRACTOR SHALL PRESERVE AND PROTECT EXISTING UTILITIES EXPOSED DURING TRENCH EXCAVATION AND BACKFILL AS REQUIRED.
2. ELEVATION OF EXISTING UTILITY SHOWN IS APPROXIMATE, POT HOLE AND VERIFY EXISTING UTILITY ELEVATION AND NOTIFY ENGINEER OF ANY POTENTIAL CONFLICTS.
3. APPROXIMATELY 230 FEET TO UPSTREAM MANHOLE AND 520 FEET TO DOWNSTREAM MANHOLE FOR BYPASS PUMPING WHEN MAKING CONNECTION TO EXISTING SEWER.



DESIGNED BY: M. LEES	CHECKED BY: L. WILHITE	DATE: 4/30/2021
DRAWN BY: A. LINDSEY	DATE: 4/30/2021	DATE: 4/30/2021
PROJECT: 439-65-68		
SHEET: 439-65-68-1250T_A LINE.dwg		
COPYRIGHT 2021 BY ANDERSON PERRY & ASSOC., INC.		



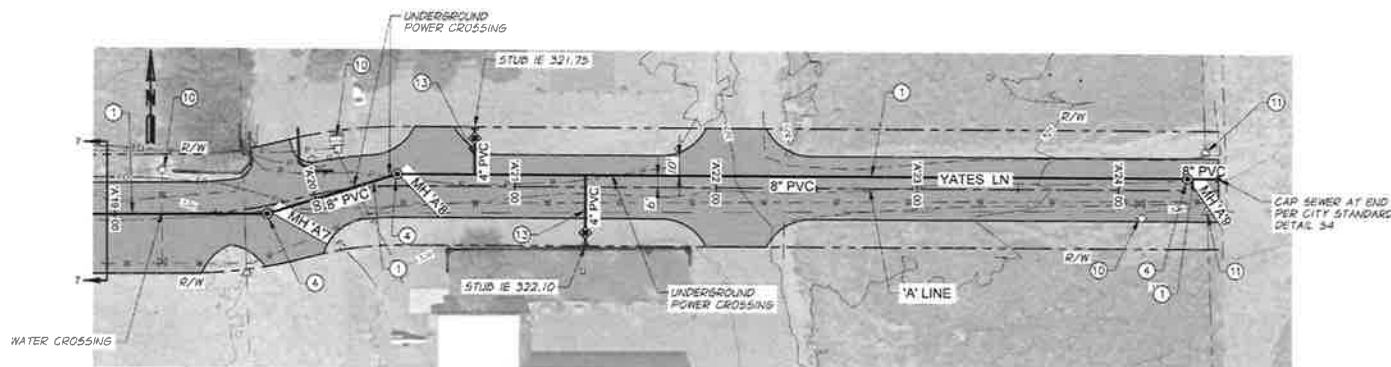
CITY OF BOARDMAN
LAUREL LANE AND LOOP ROAD IMPROVEMENTS
SEWER PIPING
'A' LINE - STA. 'A'13+50 TO STA. 'A'19+00

SHEET

7

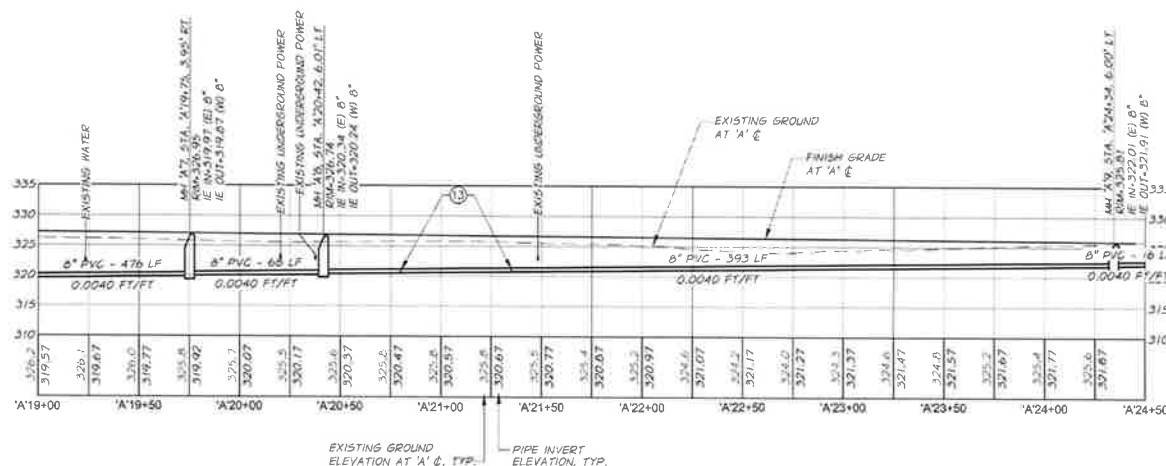
WORK ITEM SCHEDULE

1. INSTALL 8" PVC SEWER LINE AT THE GRADE SHOWN SEE CITY STANDARD DETAIL 51
2. INSTALL 8" SEWER IN THE EXISTING 12" ADS SLEEVE, SEE DETAIL SHEET 12
3. RESERVED
4. INSTALL SEWER MANHOLE SEE CITY STANDARD DETAIL 51
5. CONNECT EXISTING SEWER WITH FITTING AS REQUIRED TO NEW MANHOLE. CONTRACTOR TO VERIFY EXISTING PIPE ELEVATION
6. RESERVED
7. RESTORE LANDSCAPE, SIDEWALK, ASPHALT, AND CURB AND GUTTER BETWEEN APPROX. STA. 51+00 TO STA. 51+50 TO EQUAL OR BETTER THAN EXISTING CONDITION.
8. ASPHALT SURFACE RESTORATION AS REQUIRED FOR MANHOLE AND SEWER INSTALLATION SEE CITY STANDARD DETAIL 512
9. RESERVED
10. PRESERVE AND PROTECT EXISTING UTILITY OR SEE ROADWAY DRAWINGS WORK ITEM SCHEDULE.
11. EXISTING SURVEY MONUMENT SEE THE GENERAL REQUIREMENTS FOR INSTRUCTION.
12. REMOVE EXISTING SIGN AND DELIVER TO OWNER.
13. INSTALL SEWER SERVICE, LOCATION AS DETERMINED BY THE ENGINEER. SEE CITY STANDARD DETAILS 54 AND 56



NOTES

1. CONTRACTOR SHALL PRESERVE AND PROTECT EXISTING UTILITIES EXPOSED DURING TRENCH EXCAVATION AND BACKFILL AS REQUIRED.
2. ELEVATION OF EXISTING UTILITY SHOWN IS APPROXIMATE. POT HOLE AND VERIFY EXISTING UTILITY ELEVATION AND NOTIFY ENGINEER OF ANY POTENTIAL CONFLICTS.
3. APPROXIMATELY 250 FEET TO UPSTREAM MANHOLE AND 520 FEET TO DOWNSTREAM MANHOLE FOR BYPASS PUMPING WHEN MAKING CONNECTION TO EXISTING SEWER.



PROJECT:		DATE:	
DESIGNED BY:	M. LEES	DATE:	2021
DRAWN BY:	L. WILLIAMS	DATE:	2021
CHECKED BY:	A. LINDSEY	DATE:	2021
COPYRIGHT 2021 BY ANDERSON PERRY & ASSOC., INC.			



CITY OF BOARDMAN
LAUREL LANE AND LOOP ROAD IMPROVEMENTS

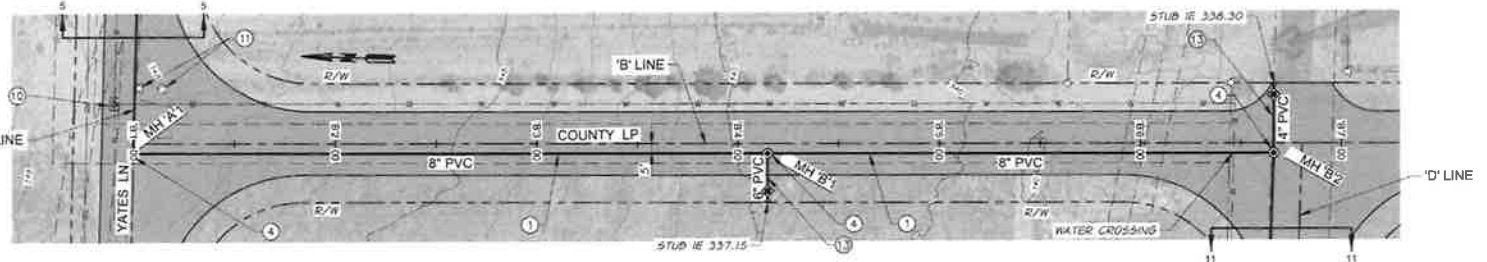
SEWER PIPING
'A' LINE - STA. 'A'19+00 TO STA. 'A'24+50

SHEET
8

WORK ITEM SCHEDULE

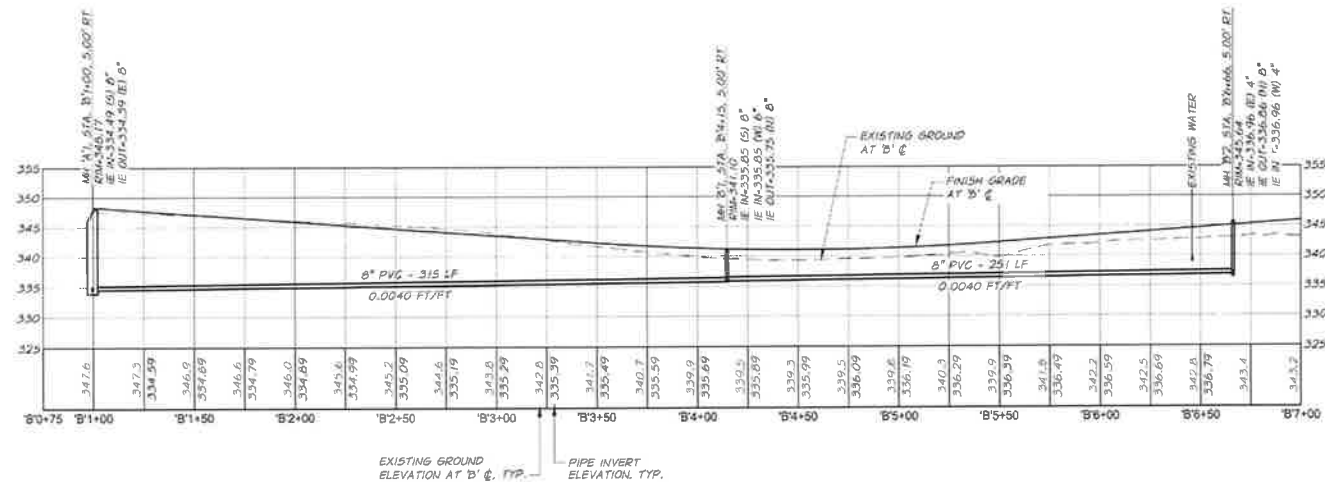
- ① INSTALL 8" PVC SEWER LINE AT THE GRADE SHOWN. SEE CITY STANDARD DETAIL 51
- ② INSTALL 8" SEWER IN THE EXISTING 12" ADS SLEEVE. SEE DETAIL, SHEET 12
- ③ RESERVED
- ④ INSTALL SEWER MANHOLE SEE CITY STANDARD DETAIL 51
- ⑤ CONNECT EXISTING SEWER WITH FITTING AS REQUIRED TO NEW MANHOLE. CONTRACTOR TO VERIFY EXISTING PIPE ELEVATION
- ⑥ RESERVED
- ⑦ RESTORE LANDSCAPE, SIDEWALK, ASPHALT, AND CURB AND GUTTER BETWEEN APPROX. STA. 'S1+00 TO STA. 'S1+50 TO EQUAL OR BETTER THAN EXISTING CONDITION.
- ⑧ ASPHALT SURFACE RESTORATION AS REQUIRED FOR MANHOLE AND SEWER INSTALLATION SEE CITY STANDARD DETAIL 512
- ⑨ RESERVED
- ⑩ PRESERVE AND PROTECT EXISTING UTILITY OR SEE ROADWAY DRAWINGS WORK ITEM SCHEDULE.
- ⑪ EXISTING SURVEY MONUMENT SEE THE GENERAL REQUIREMENTS FOR INSTRUCTION.
- ⑫ REMOVE EXISTING SIGN AND DELIVER TO OWNER.
- ⑬ INSTALL SEWER SERVICE, LOCATION AS DETERMINED BY THE ENGINEER. SEE CITY STANDARD DETAILS 54 AND 56

⑫ CONTRACTOR TO INCLUDE HIGHLIGHTED WORK ITEMS IN ADDITIVE ALTERNATIVE.



NOTES

1. CONTRACTOR SHALL PRESERVE AND PROTECT EXISTING UTILITIES EXPOSED DURING TRENCH EXCAVATION AND BACKFILL AS REQUIRED.
2. ELEVATION OF EXISTING UTILITY SHOWN IS APPROXIMATE. POTHOLE AND VERIFY EXISTING UTILITY ELEVATION AND NOTIFY ENGINEER OF ANY POTENTIAL CONFLICTS.
3. APPROXIMATELY 230 FEET TO UPSTREAM MANHOLE AND 520 FEET TO DOWNSTREAM MANHOLE FOR BYPASS PUMPING WHEN MAKING CONNECTION TO EXISTING SEWER.



DESIGNED BY: M. LEES	DATE: 4/19/2021
CHECKED BY: L. WILLIAMS	DATE: 4/19/2021
APPROVED BY: A. LINDSEY	DATE: 4/19/2021
PROJECT: 439-65-0600-127UT_BLINE.dwg	
COPYRIGHT 2021 BY ANDERSON PERRY & ASSOC., INC.	



CITY OF BOARDMAN
LAUREL LANE AND LOOP ROAD IMPROVEMENTS

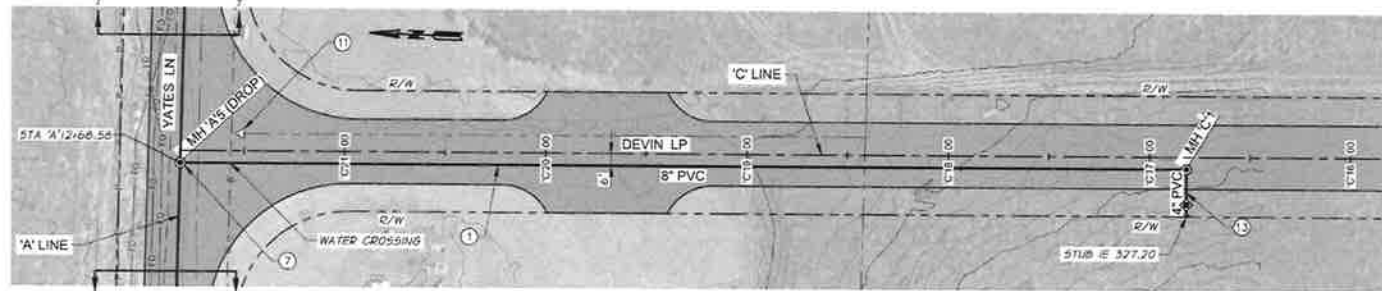
SEWER PIPING
'B' LINE - STA. 'B1+00 TO STA. 'B6+88

SHEET

9

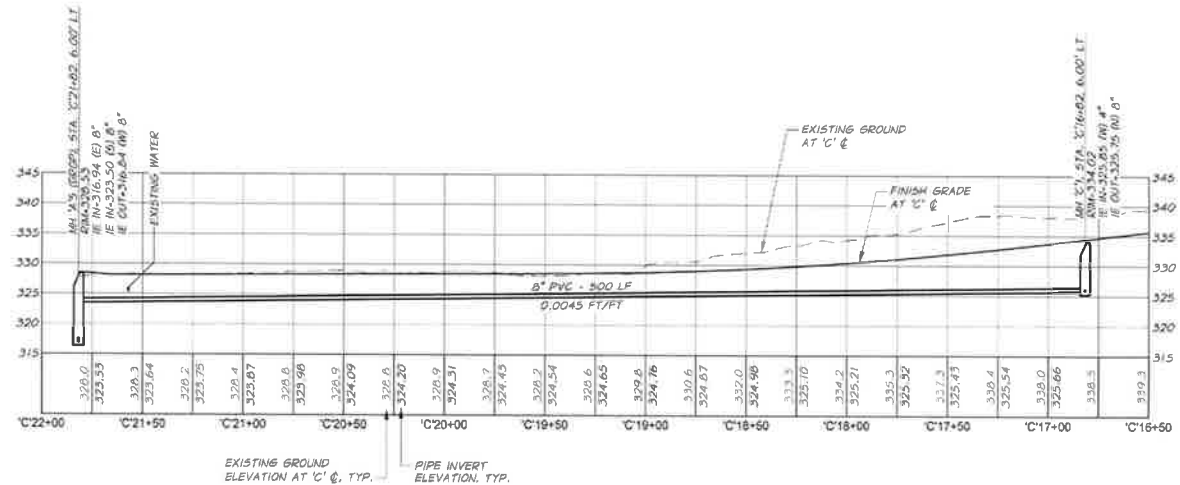
WORK ITEM SCHEDULE

1. INSTALL 8" PVC SEWER LINE AT THE GRADE SHOWN. SEE CITY STANDARD DETAIL 571
2. INSTALL 8" SEWER IN THE EXISTING 12" ADS SLEEVE. SEE DETAIL SHEET 12
3. RESERVED
4. INSTALL SEWER MANHOLE SEE CITY STANDARD DETAIL 51
5. CONNECT EXISTING SEWER WITH FITTING AS REQUIRED TO NEW MANHOLE. CONTRACTOR TO VERIFY EXISTING PIPE ELEVATION
6. RESERVED
7. RESTORE LANDSCAPE, SIDEWALK, ASPHALT, AND CURB AND GUTTER BETWEEN APPROX. STA. 5+10.00 TO STA. 5+10.50 TO EQUAL OR BETTER THAN EXISTING CONDITION.
8. ASPHALT SURFACE RESTORATION AS REQUIRED FOR MANHOLE AND SEWER INSTALLATION SEE CITY STANDARD DETAIL 572
9. RESERVED
10. PRESERVE AND PROTECT EXISTING UTILITY OR SEE ROADWAY DRAWINGS WORK ITEM SCHEDULE.
11. EXISTING SURVEY MONUMENT SEE THE GENERAL REQUIREMENTS FOR INSTRUCTION.
12. REMOVE EXISTING SIGN AND DELIVER TO OWNER.
13. INSTALL SEWER SERVICE, LOCATION AS DETERMINED BY THE ENGINEER. SEE CITY STANDARD DETAILS 54 AND 56



NOTES

1. CONTRACTOR SHALL PRESERVE AND PROTECT EXISTING UTILITIES EXPOSED DURING TRENCH EXCAVATION AND BACKFILL AS REQUIRED.
2. ELEVATION OF EXISTING UTILITY SHOWN IS APPROXIMATE. POTHOLE AND VERIFY EXISTING UTILITY ELEVATION AND NOTIFY ENGINEER OF ANY POTENTIAL CONFLICTS.
3. APPROXIMATELY 230 FEET TO UPSTREAM MANHOLE AND 520 FEET TO DOWNSTREAM MANHOLE FOR BYPASS PUMPING WHEN MAKING CONNECTION TO EXISTING SEWER.



DESIGNED BY M. LEED	DATE 4/19/2021
DRAWN BY L. WILLIAMS	CHECKED BY A. LINDSEY
PROJECT NO. 439-65-060C-129LIT_CLINE.dwg	DATE 2021
COPYRIGHT 2021 BY ANDERSON PERRY & ASSOC., INC.	



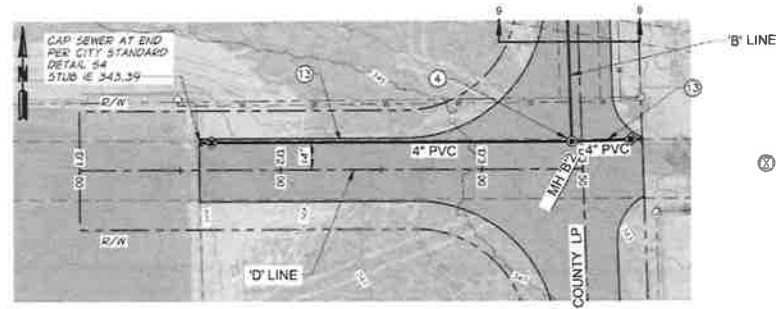
CITY OF BOARDMAN
LAUREL LANE AND LOOP ROAD IMPROVEMENTS

SEWER PIPING
'C' LINE - STA. 'C'16+82 TO STA. 'C'21+81

SHEET
10

WORK ITEM SCHEDULE

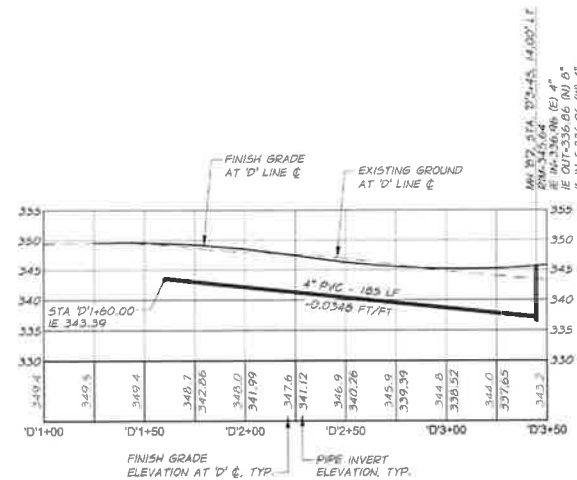
1. INSTALL 8" PVC SEWER LINE AT THE GRADE SHOWN SEE CITY STANDARD DETAIL 51
2. INSTALL 8" SEWER IN THE EXISTING 12" ADS SLEEVE, SEE DETAIL SHEET 12
3. RESERVED
4. INSTALL SEWER MANHOLE SEE CITY STANDARD DETAIL 51
5. CONNECT EXISTING SEWER WITH FITTING AS REQUIRED TO NEW MANHOLE. CONTRACTOR TO VERIFY EXISTING PIPE ELEVATION
6. RESERVED
7. RESTORE LANDSCAPE, SIDEWALK, ASPHALT, AND CURB AND GUTTER BETWEEN APPROX. STA. 'S1+00 TO STA. 'S1+50 TO EQUAL OR BETTER THAN EXISTING CONDITION.
8. ASPHALT SURFACE RESTORATION AS REQUIRED FOR MANHOLE AND SEWER INSTALLATION SEE CITY STANDARD DETAIL 512
9. RESERVED
10. PRESERVE AND PROTECT EXISTING UTILITY OR SEE ROADWAY DRAWINGS WORK ITEM SCHEDULE.
11. EXISTING SURVEY MONUMENT SEE THE GENERAL REQUIREMENTS FOR INSTRUCTION.
12. REMOVE EXISTING SIGN AND DELIVER TO OWNER.
13. INSTALL SEWER SERVICE LOCATION AS DETERMINED BY THE ENGINEER. SEE CITY STANDARD DETAILS 54 AND 56



13. CONTRACTOR TO INCLUDE HIGHLIGHTED WORK ITEMS IN ADDITIVE ALTERNATIVE.

NOTES

1. CONTRACTOR SHALL PRESERVE AND PROTECT EXISTING UTILITIES EXPOSED DURING TRENCH EXCAVATION AND BACKFILL AS REQUIRED.
2. ELEVATION OF EXISTING UTILITY SHOWN IS APPROXIMATE. POTHOLE AND VERIFY EXISTING UTILITY ELEVATION AND NOTIFY ENGINEER OF ANY POTENTIAL CONFLICTS.
3. APPROXIMATELY 250 FEET TO UPSTREAM MANHOLE AND 520 FEET TO DOWNSTREAM MANHOLE FOR BYPASS PUMPING WHEN MAKING CONNECTION TO EXISTING SEWER.



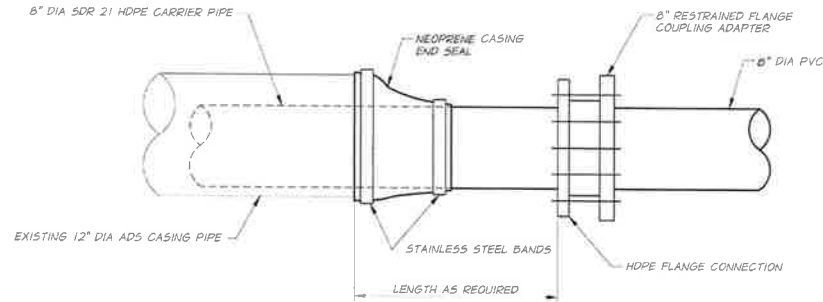
DESIGNED BY: M. LEES	CHECKED BY: L. WILHITE	DATE: 2021
DRAWN BY: A. LINDSEY	DATE: 2021	PROJECT: 439-65-060C-128UT_DLINE.dwg
COPYRIGHT 2021 BY ANDERSON PERRY & ASSOC., INC.		



CITY OF BOARDMAN
LAUREL LANE AND LOOP ROAD IMPROVEMENTS

SEWER PIPING
D' LINE - STA. 'D'1+25 TO STA. 'D'3+50

SHEET
11



HDPE CARRIER PIPE DETAIL
N.T.S.

O:\CADD\04\439-65-0600\Drawings\439-65-0600-501PIPE.dwg Linplot: 7/11/2011 3:52 PM c:\hms\hms



DESIGNED BY	M. LEEDS	DATE	7/11/2011
DRAWN BY	L. WILLHITE	DATE	7/11/2011
CHECKED BY	A. LINDSEY	DATE	7/11/2011
JOB NUMBER 439-65-0600 SHEET 2021			
READ FILE 439-65-0600-501PIPE.dwg			
COPYRIGHT 2011 BY ANDERSON PERRY & ASSOC., INC.			



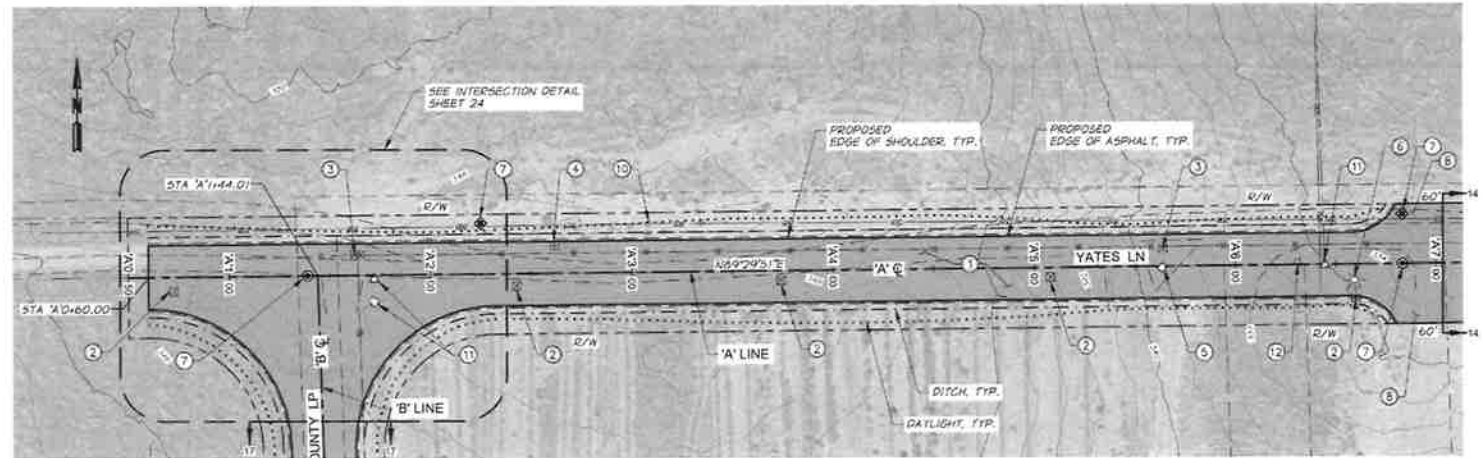
CITY OF BOARDMAN
LAUREL LANE AND LOOP ROAD IMPROVEMENTS

SEWER PIPING
MISCELLANEOUS DETAILS

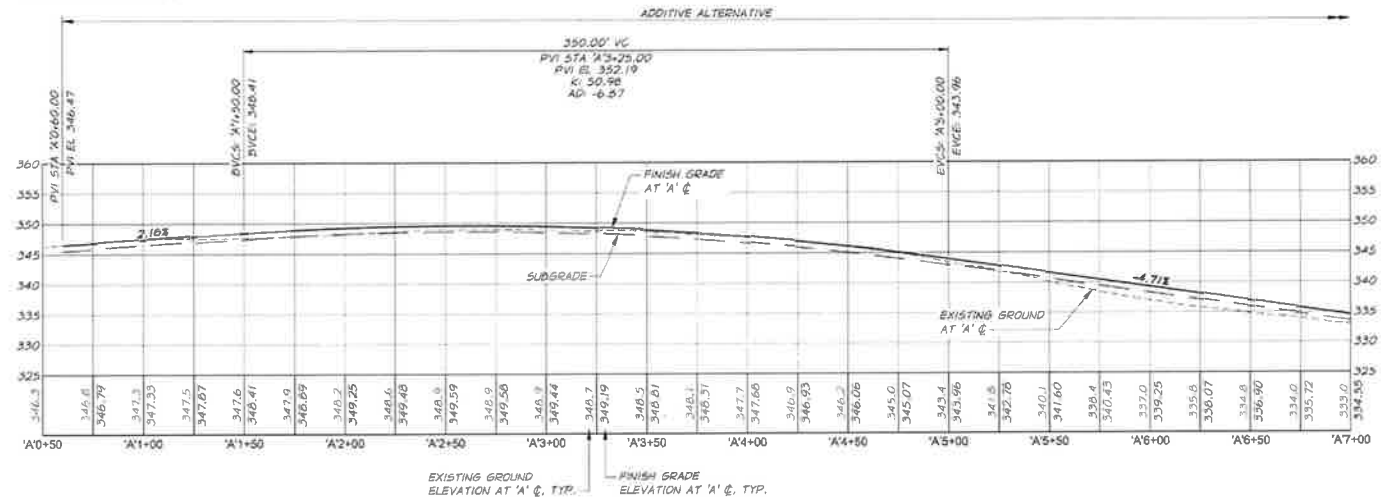
SHEET
12

WORK ITEM SCHEDULE

- 1 CONSTRUCT ROADWAY
SEE TYPICAL SECTION, SHEET 23
- 2 RELOCATE IRRIGATION JUNCTION BOX/VALVE
AS DIRECTED BY THE ENGINEER.
- 3 ADJUST EXISTING VALVE BOX TO GRADE AND
INSTALL CONCRETE VALVE COLLAR
SEE CITY STANDARD DETAIL W5
- 4 RELOCATE EXISTING AIR RELIEF VALVE
AS DIRECTED BY THE ENGINEER.
SEE CITY STANDARD DETAIL W10
- 5 RELOCATE EXISTING FIRE HYDRANT
AS DIRECTED BY THE ENGINEER.
SEE CITY STANDARD DETAIL W6
- 6 RELOCATE LIGHT POLE
AS DIRECTED BY THE ENGINEER.
- 7 INSTALL CONCRETE COLLAR
SEE CITY STANDARD DETAIL 55
- 8 CONSTRUCT DRIVEWAY APPROACH, LOCATION
AS DIRECTED BY THE ENGINEER.
SEE DETAIL, SHEET 27
- 9 ADJUST EXISTING UTILITY TO GRADE
- 10 PRESERVE AND PROTECT EXISTING UTILITY
- 11 EXISTING SURVEY MONUMENT
SEE THE GENERAL REQUIREMENTS FOR
INSTRUCTION.
- 12 REMOVE EXISTING SIGN AND POST
AND DELIVER TO OWNER
- 13 CONSTRUCT ISLAND
SEE SHEET 24 AND
OREGON STANDARD DRAWING RD705
- 14 SAWCUT EXISTING ASPHALT



X CONTRACTOR TO INCLUDE
HIGHLIGHTED WORK ITEMS
IN ADDITIVE ALTERNATIVE



EXISTING GROUND
ELEVATION AT 'A' C, TYP.

FINISH GRADE
ELEVATION AT 'A' C, TYP.



DESIGNED BY: M. LEES	DATE: 2021
DRAWN BY: L. WILHITE	DATE: 2021
CHECKED BY: A. LINDSEY	DATE: 2021
PROJECT: 439-65-060C-101RD_PP_A.dwg	
COPYRIGHT 2021 BY ANDERSON PERRY & ASSOC., INC.	

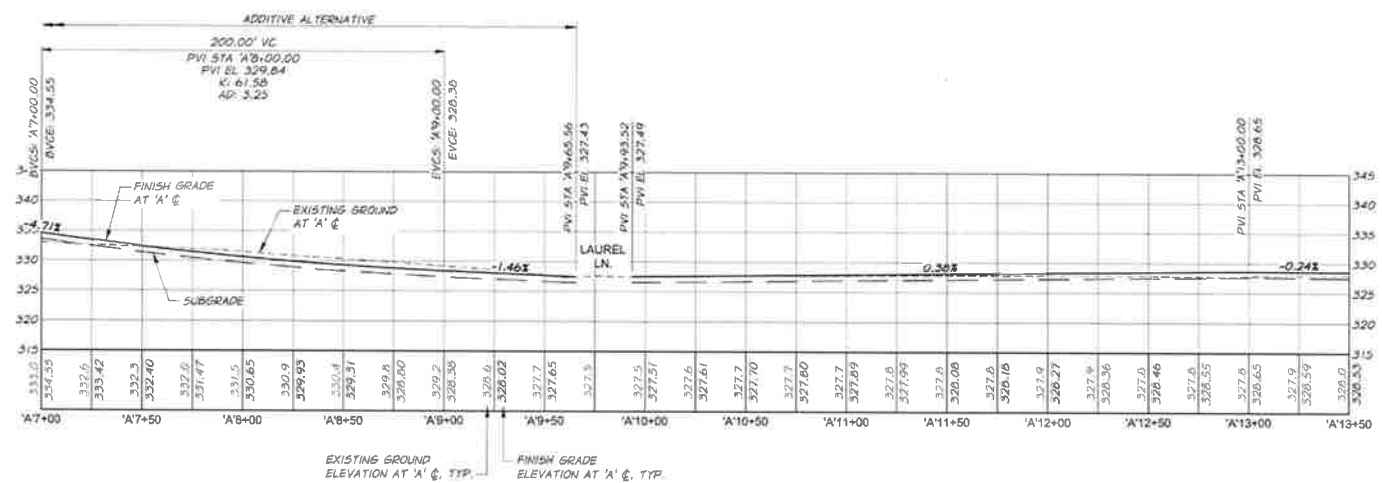
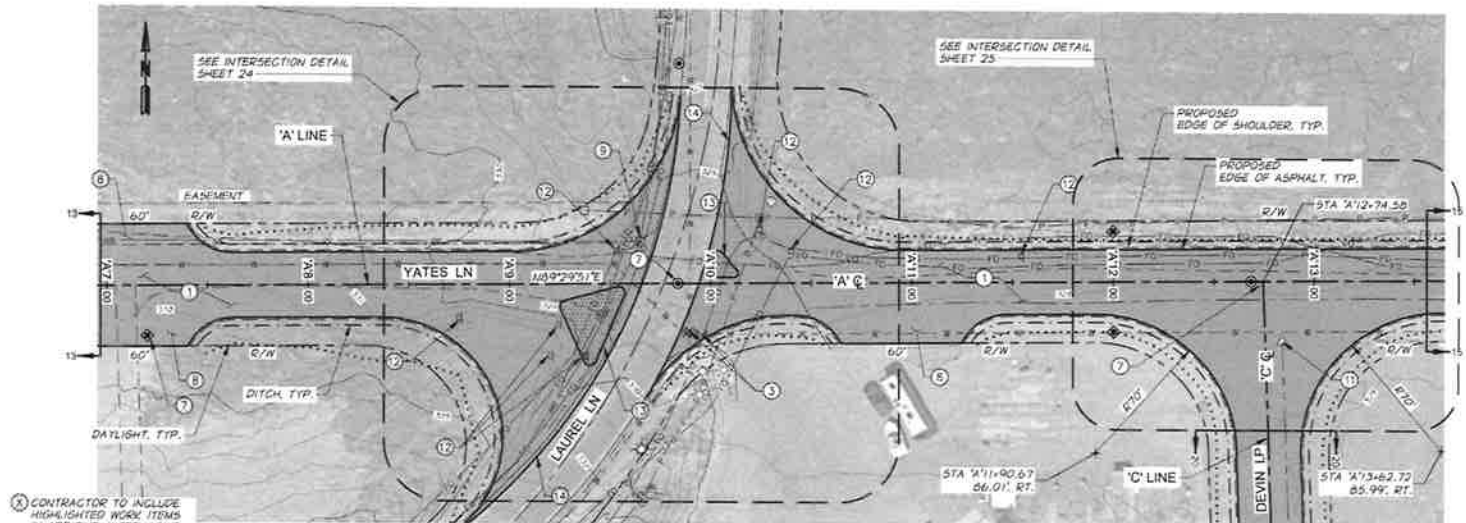


CITY OF BOARDMAN
LAUREL LANE AND LOOP ROAD IMPROVEMENTS
ROADWAY
'A' LINE - STA. 10+60 TO STA. 17+00

SHEET
13

WORK ITEM SCHEDULE

- ① CONSTRUCT ROADWAY
SEE TYPICAL SECTION, SHEET 23
- ② RELOCATE IRRIGATION JUNCTION BOX/VALVE
AS DIRECTED BY THE ENGINEER.
- ③ ADJUST EXISTING VALVE BOX TO GRADE AND
INSTALL CONCRETE VALVE COLLAR
SEE CITY STANDARD DETAIL W5
- ④ RELOCATE EXISTING AIR RELIEF VALVE
AS DIRECTED BY THE ENGINEER.
SEE CITY STANDARD DETAIL W10
- ⑤ RELOCATE EXISTING FIRE HYDRANT
AS DIRECTED BY THE ENGINEER.
SEE CITY STANDARD DETAIL W6
- ⑥ RELOCATE LIGHT POLE
AS DIRECTED BY THE ENGINEER.
- ⑦ INSTALL CONCRETE COLLAR
SEE CITY STANDARD DETAIL 55
- ⑧ CONSTRUCT DRIVEWAY APPROACH, LOCATION
AS DIRECTED BY THE ENGINEER.
SEE DETAIL, SHEET 27
- ⑨ ADJUST EXISTING UTILITY TO GRADE
- ⑩ PRESERVE AND PROTECT EXISTING UTILITY
- ⑪ EXISTING SURVEY MONUMENT
SEE THE GENERAL REQUIREMENTS FOR
INSTRUCTION.
- ⑫ REMOVE EXISTING SIGN AND POST
AND DELIVER TO OWNER
- ⑬ CONSTRUCT ISLAND
SEE SHEET 24 AND
OREGON STANDARD DRAWING RD705
- ⑭ SAWCUT EXISTING ASPHALT



DESIGNED BY M. LEES	CHECKED BY L. WILHITE	DATE 2021
DRAWN BY A. LINDSEY	DATE 2021	PROJECT 439-65-68
PROJECT 439-65-0600-102RD_PP_A.dwg		
COPYRIGHT 2011 BY ANDERSON PERRY & ASSOC., INC.		



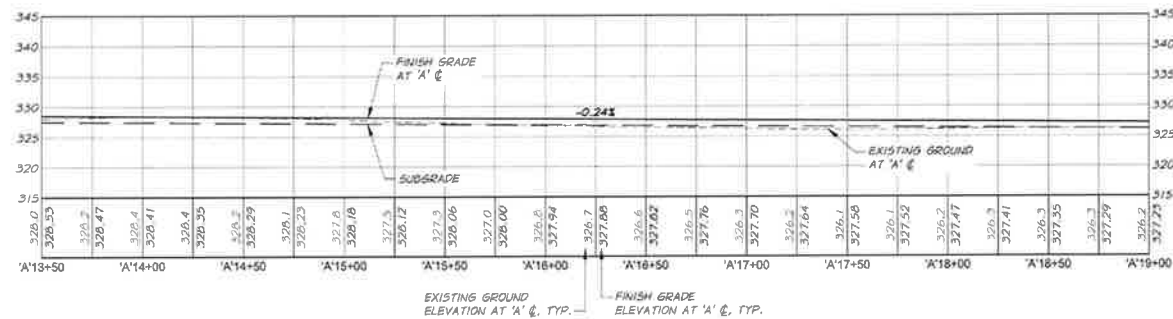
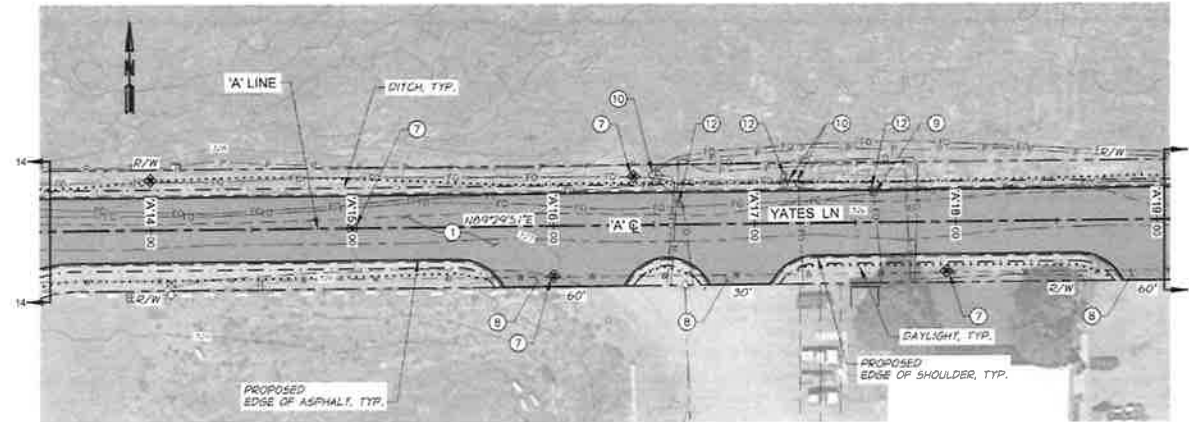
CITY OF BOARDMAN
LAUREL LANE AND LOOP ROAD IMPROVEMENTS

ROADWAY
'A' LINE - STA. 'A'7+00 TO STA. 'A'13+50

SHEET
14

WORK ITEM SCHEDULE

1. CONSTRUCT ROADWAY
SEE TYPICAL SECTION, SHEET 23
2. RELOCATE IRRIGATION JUNCTION BOX/VALVE
AS DIRECTED BY THE ENGINEER.
3. ADJUST EXISTING VALVE BOX TO GRADE AND
INSTALL CONCRETE VALVE COLLAR
SEE CITY STANDARD DETAIL W5
4. RELOCATE EXISTING AIR RELIEF VALVE
AS DIRECTED BY THE ENGINEER.
SEE CITY STANDARD DETAIL W10
5. RELOCATE EXISTING FIRE HYDRANT
AS DIRECTED BY THE ENGINEER.
SEE CITY STANDARD DETAIL W6
6. RELOCATE LIGHT POLE
AS DIRECTED BY THE ENGINEER.
7. INSTALL CONCRETE COLLAR
SEE CITY STANDARD DETAIL 55
8. CONSTRUCT DRIVEWAY APPROACH, LOCATION
AS DIRECTED BY THE ENGINEER.
SEE DETAIL, SHEET 27
9. ADJUST EXISTING UTILITY TO GRADE
10. PRESERVE AND PROTECT EXISTING UTILITY
11. EXISTING SURVEY MONUMENT
SEE THE GENERAL REQUIREMENTS FOR
INSTRUCTION.
12. REMOVE EXISTING SIGN AND POST
AND DELIVER TO OWNER
13. CONSTRUCT ISLAND
SEE SHEET 24 AND
OREGON STANDARD DRAWING RD705
14. SAWCUT EXISTING ASPHALT



DESIGNED BY M. LEES	CHECKED BY E. WHITE	DATE 2021
DRAWN BY A. LINDSET	SCALE AS SHOWN	PROJECT 439-85-060C-103RD_PP_A.dwg
COPYRIGHT 2021 BY ANDERSON PERRY & ASSOC., INC.		

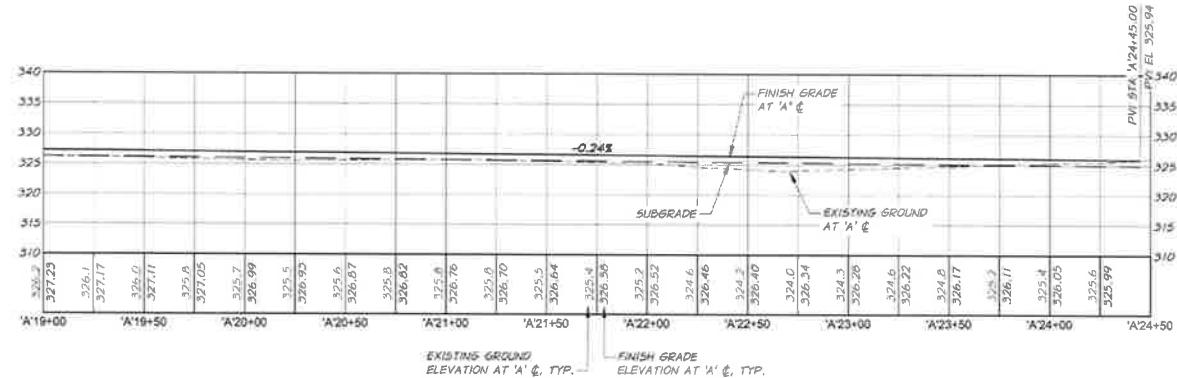
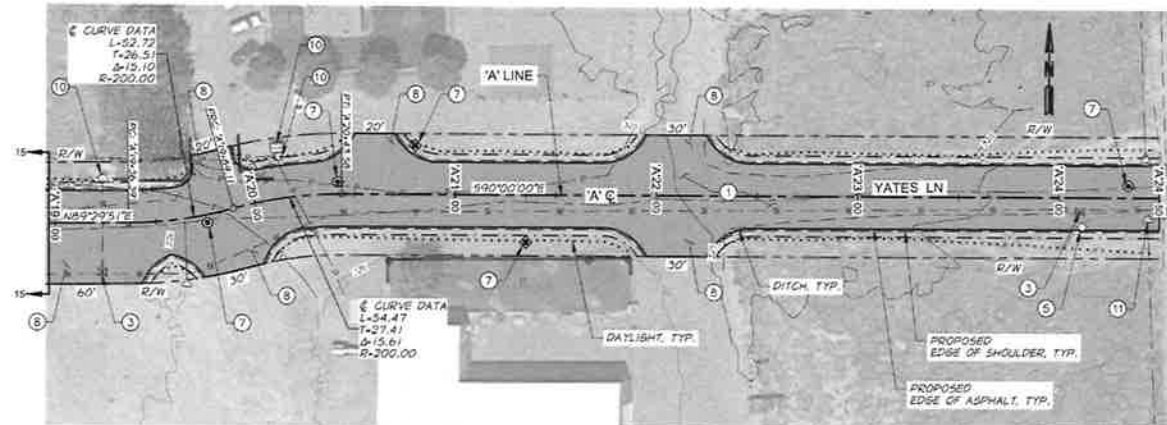


CITY OF BOARDMAN
LAUREL LANE AND LOOP ROAD IMPROVEMENTS
ROADWAY
'A' LINE - STA. 'A'13+50 TO STA. 'A'19+00

SHEET
15

WORK ITEM SCHEDULE

- 1 CONSTRUCT ROADWAY
SEE TYPICAL SECTION, SHEET 23
- 2 RELOCATE IRRIGATION JUNCTION BOX/VALVE
AS DIRECTED BY THE ENGINEER.
- 3 ADJUST EXISTING VALVE BOX TO GRADE AND
INSTALL CONCRETE VALVE COLLAR
SEE CITY STANDARD DETAIL W5
- 4 RELOCATE EXISTING AIR RELIEF VALVE
AS DIRECTED BY THE ENGINEER.
SEE CITY STANDARD DETAIL W10
- 5 RELOCATE EXISTING FIRE HYDRANT
AS DIRECTED BY THE ENGINEER.
SEE CITY STANDARD DETAIL W6
- 6 RELOCATE LIGHT POLE
AS DIRECTED BY THE ENGINEER.
- 7 INSTALL CONCRETE COLLAR
SEE CITY STANDARD DETAIL 55
- 8 CONSTRUCT DRIVEWAY APPROACH, LOCATION
AS DIRECTED BY THE ENGINEER.
SEE DETAIL, SHEET 27
- 9 ADJUST EXISTING UTILITY TO GRADE
- 10 PRESERVE AND PROTECT EXISTING UTILITY
- 11 EXISTING SURVEY MONUMENT
SEE THE GENERAL REQUIREMENTS FOR
INSTRUCTION.
- 12 REMOVE EXISTING SIGN AND POST
AND DELIVER TO OWNER
- 13 CONSTRUCT ISLAND
SEE SHEET 24 AND
OREGON STANDARD DRAWING RD705
- 14 SAWCUT EXISTING ASPHALT



DESIGNED BY	M. LEES	CHECKED BY	L. WILHITE	DATE	2021
DRAWN BY	A. LINDSEY	DATE	2021		
PROJECT	439-85-68				
SCALE	1"=40'				
DATE	2021				
PROJECT	439-85-68-0600-104RD_PP_A.dwg				
SCALE	1"=40'				
DATE	2021				
PROJECT	439-85-68-0600-104RD_PP_A.dwg				
SCALE	1"=40'				
DATE	2021				

anderson
perry
& associates, inc.

CITY OF BOARDMAN
LAUREL LANE AND LOOP ROAD IMPROVEMENTS

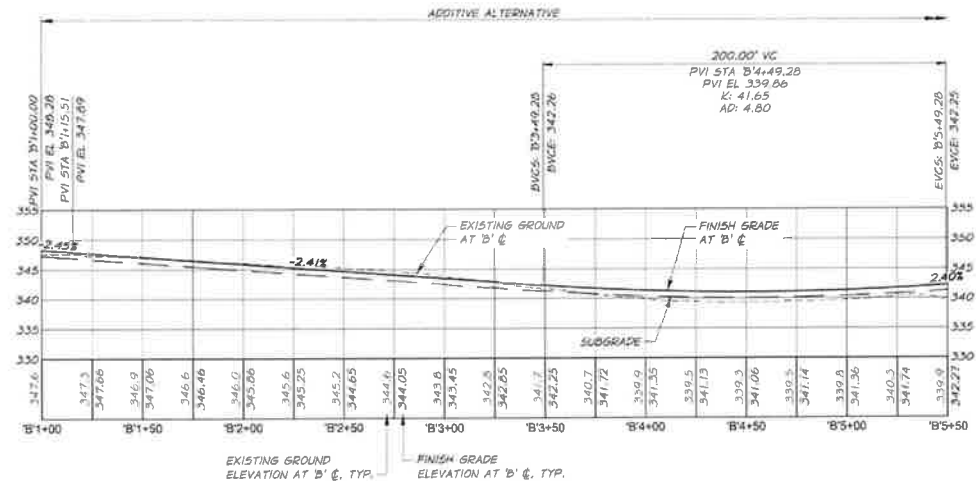
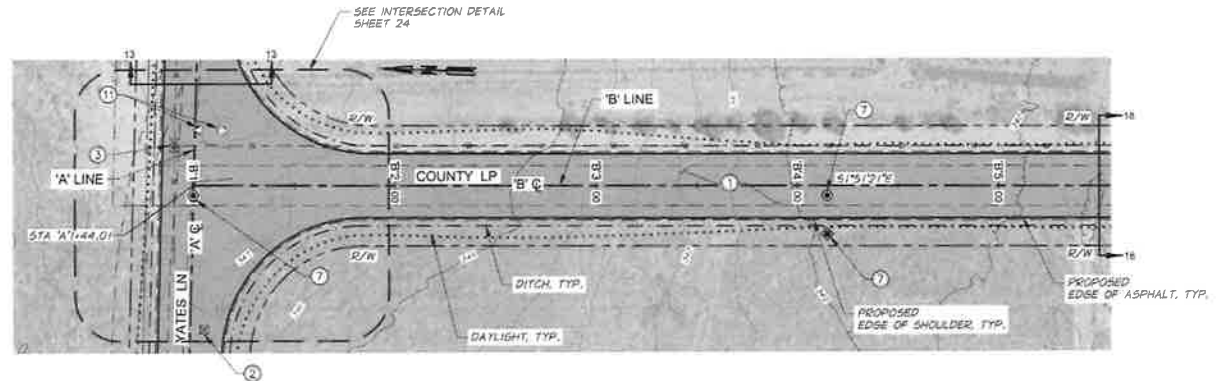
ROADWAY
'A' LINE - STA. 'A'19+00 TO STA. 'A'24+50

SHEET
16

WORK ITEM SCHEDULE

- ① CONSTRUCT ROADWAY
SEE TYPICAL SECTION, SHEET 23
- ② RELOCATE IRRIGATION JUNCTION BOX/VALVE
AS DIRECTED BY THE ENGINEER.
- ③ ADJUST EXISTING VALVE BOX TO GRADE AND
INSTALL CONCRETE VALVE COLLAR
SEE CITY STANDARD DETAIL W5
- ④ RELOCATE EXISTING AIR RELIEF VALVE
AS DIRECTED BY THE ENGINEER.
SEE CITY STANDARD DETAIL W10
- ⑤ RELOCATE EXISTING FIRE HYDRANT
AS DIRECTED BY THE ENGINEER.
SEE CITY STANDARD DETAIL W6
- ⑥ RELOCATE LIGHT POLE
AS DIRECTED BY THE ENGINEER.
- ⑦ INSTALL CONCRETE COLLAR
SEE CITY STANDARD DETAIL 55
- ⑧ CONSTRUCT DRIVEWAY APPROACH, LOCATION
AS DIRECTED BY THE ENGINEER.
SEE DETAIL, SHEET 27
- ⑨ ADJUST EXISTING UTILITY TO GRADE
- ⑩ PRESERVE AND PROTECT EXISTING UTILITY
- ⑪ EXISTING SURVEY MONUMENT
SEE THE GENERAL REQUIREMENTS FOR
INSTRUCTION.
- ⑫ REMOVE EXISTING SIGN AND POST
AND DELIVER TO OWNER
- ⑬ CONSTRUCT ISLAND
SEE SHEET 24 AND
OREGON STANDARD DRAWING RD705
- ⑭ SAWCUT EXISTING ASPHALT

ⓧ CONTRACTOR TO INCLUDE
HIGHLIGHTED WORK ITEMS
IN ADDITIVE ALTERNATIVE.



DESIGNED BY: M. LEES	DATE: 4-19-65/68	SCALE: 1"=40'
DRAWN BY: L. WILLHITE	DATE: 4-19-65-0600-106RD_PP_B.dwg	SCALE: 1"=40'
CHECKED BY: A. LINDSEY	DATE: 2021	SCALE: 1"=40'



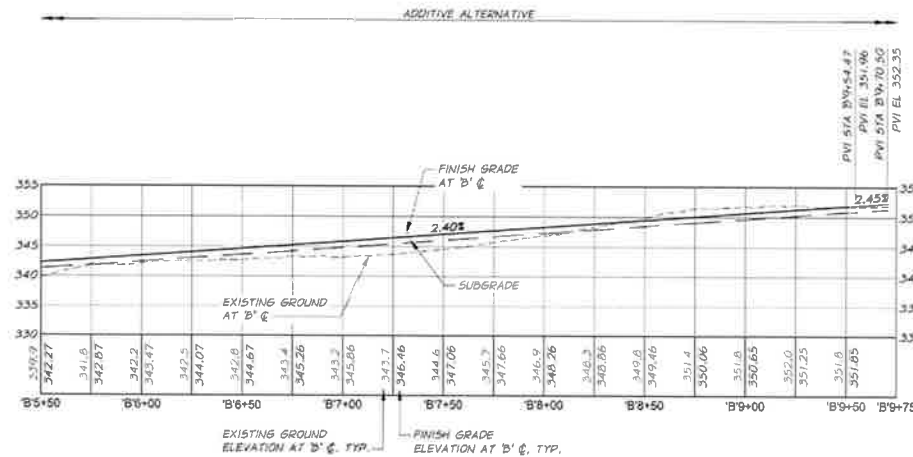
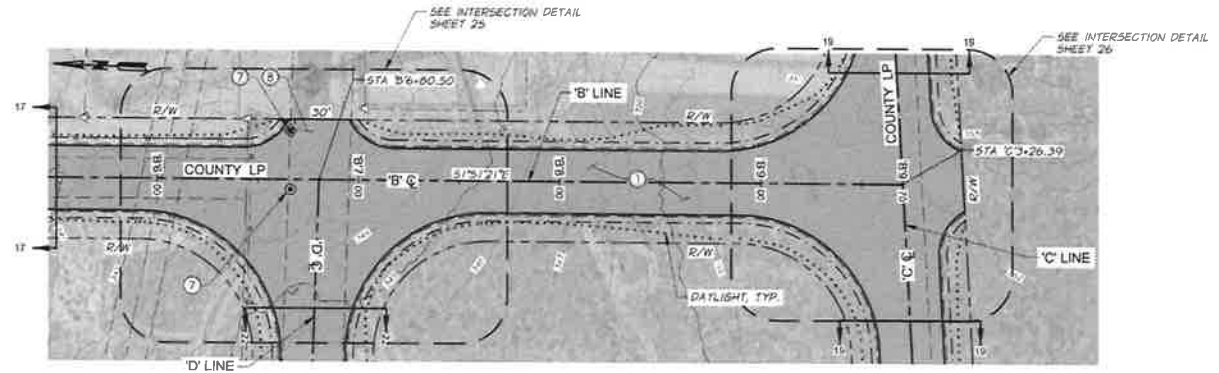
CITY OF BOARDMAN
LAUREL LANE AND LOOP ROAD IMPROVEMENTS
ROADWAY
'B' LINE - STA. B'1+00 TO STA. B'5+50

SHEET
17

WORK ITEM SCHEDULE

1. CONSTRUCT ROADWAY
SEE TYPICAL SECTION, SHEET 23
2. RELOCATE IRRIGATION JUNCTION BOX/VALVE
AS DIRECTED BY THE ENGINEER.
3. ADJUST EXISTING VALVE BOX TO GRADE AND
INSTALL CONCRETE VALVE COLLAR
SEE CITY STANDARD DETAIL W5
4. RELOCATE EXISTING AIR RELIEF VALVE
AS DIRECTED BY THE ENGINEER.
SEE CITY STANDARD DETAIL W10
5. RELOCATE EXISTING FIRE HYDRANT
AS DIRECTED BY THE ENGINEER.
SEE CITY STANDARD DETAIL W6
6. RELOCATE LIGHT POLE
AS DIRECTED BY THE ENGINEER.
7. INSTALL CONCRETE COLLAR
SEE CITY STANDARD DETAIL 55
8. CONSTRUCT DRIVEWAY APPROACH, LOCATION
AS DIRECTED BY THE ENGINEER.
SEE DETAIL, SHEET 27
9. ADJUST EXISTING UTILITY TO GRADE
10. PRESERVE AND PROTECT EXISTING UTILITY
11. EXISTING SURVEY MONUMENT
SEE THE GENERAL REQUIREMENTS FOR
INSTRUCTION.
12. REMOVE EXISTING SIGN AND POST
AND DELIVER TO OWNER
13. CONSTRUCT ISLAND
SEE SHEET 24 AND
OREGON STANDARD DRAWING RD705
14. SAWCUT EXISTING ASPHALT

8. CONTRACTOR TO INCLUDE
HIGHLIGHTED WORK ITEMS
IN ADDITIVE ALTERNATIVE.



DESIGNED BY M. LEES	DATE 05/11/2021	PROJECT 439-65-060C-106RD-PP B.dwg
DRAWN BY L. WILLHITE	DATE 05/11/2021	PROJECT 439-65-060C-106RD-PP B.dwg
CHECKED BY A. LINDSEY	DATE 05/11/2021	PROJECT 439-65-060C-106RD-PP B.dwg



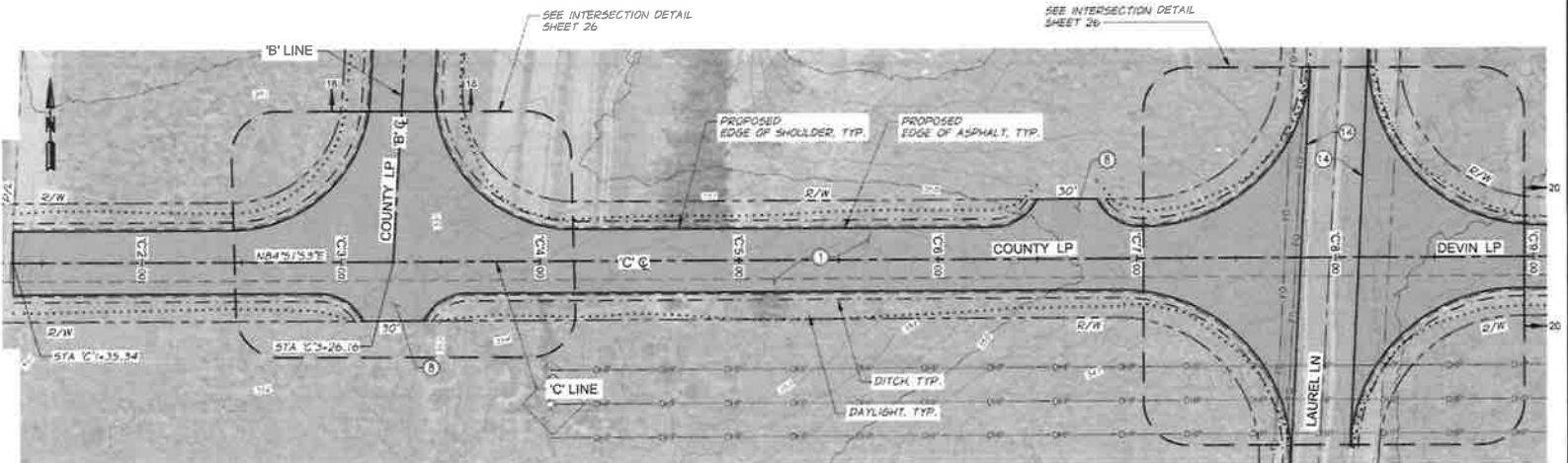
CITY OF BOARDMAN
LAUREL LANE AND LOOP ROAD IMPROVEMENTS

ROADWAY
"B" LINE - STA. B5+80 TO STA. B9+75

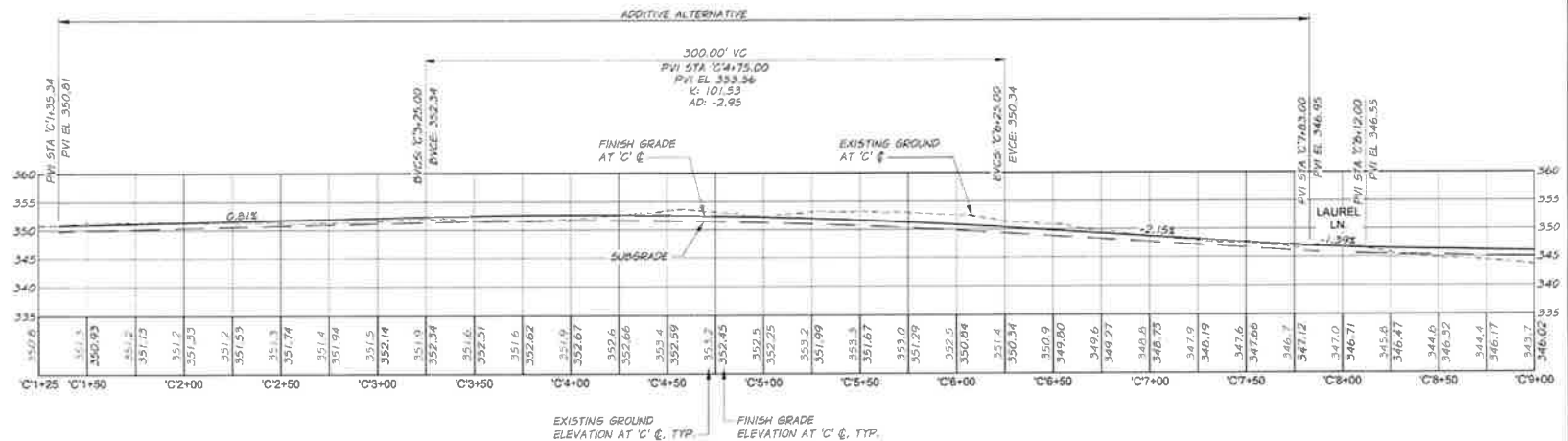
SHEET
18

WORK ITEM SCHEDULE

- ① CONSTRUCT ROADWAY
SEE TYPICAL SECTION, SHEET 23
- ② RELOCATE IRRIGATION JUNCTION BOX/VALVE
AS DIRECTED BY THE ENGINEER.
- ③ ADJUST EXISTING VALVE BOX TO GRADE AND
INSTALL CONCRETE VALVE COLLAR
SEE CITY STANDARD DETAIL W5
- ④ RELOCATE EXISTING AIR RELIEF VALVE
AS DIRECTED BY THE ENGINEER.
SEE CITY STANDARD DETAIL W10
- ⑤ RELOCATE EXISTING FIRE HYDRANT
AS DIRECTED BY THE ENGINEER.
SEE CITY STANDARD DETAIL W6
- ⑥ RELOCATE LIGHT POLE
AS DIRECTED BY THE ENGINEER.
- ⑦ INSTALL CONCRETE COLLAR
SEE CITY STANDARD DETAIL 55
- ⑧ CONSTRUCT DRIVEWAY APPROACH. LOCATION
AS DIRECTED BY THE ENGINEER.
SEE DETAIL, SHEET 27
- ⑨ ADJUST EXISTING UTILITY TO GRADE
- ⑩ PRESERVE AND PROTECT EXISTING UTILITY
- ⑪ EXISTING SURVEY MONUMENT
SEE THE GENERAL REQUIREMENTS FOR
INSTRUCTION.
- ⑫ REMOVE EXISTING SIGN AND POST
AND DELIVER TO OWNER
- ⑬ CONSTRUCT ISLAND
SEE SHEET 24 AND
OREGON STANDARD DRAWING RD705
- ⑭ SAWCUT EXISTING ASPHALT



ⓧ CONTRACTOR TO INCLUDE
HIGHLIGHTED WORK ITEMS
IN ADDITIVE ALTERNATIVE.



DESIGNED BY: M. LEES	DATE: 4/19/2021
DRAWN BY: L. WILLIAMS	DATE: 4/19/2021
CHECKED BY: J. LINDSEY	DATE: 4/19/2021

30 0 30 60 90
HORIZ. SCALE IN FEET

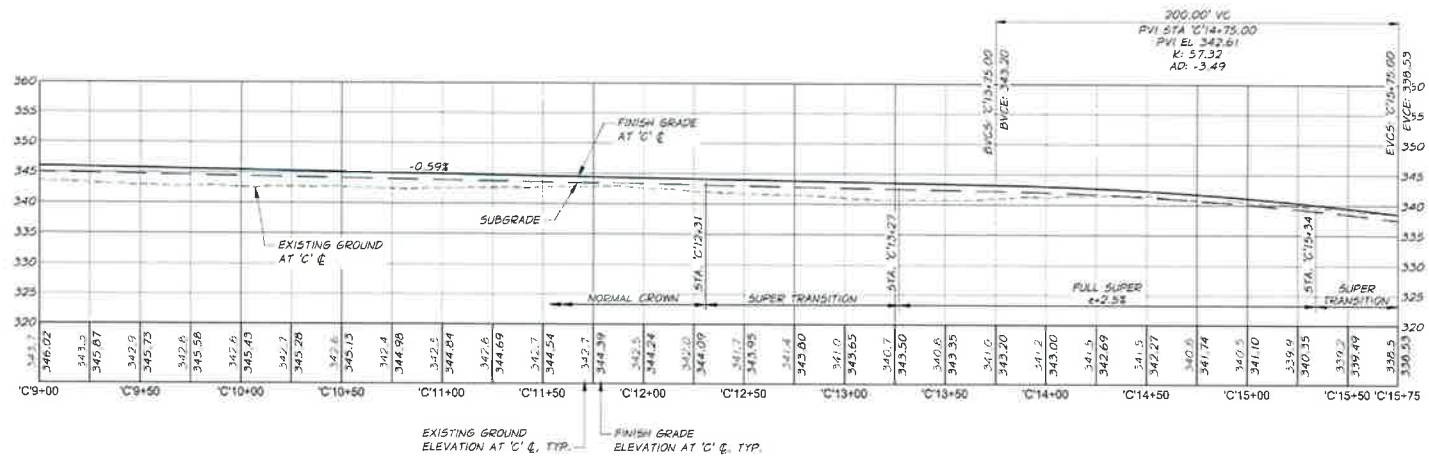
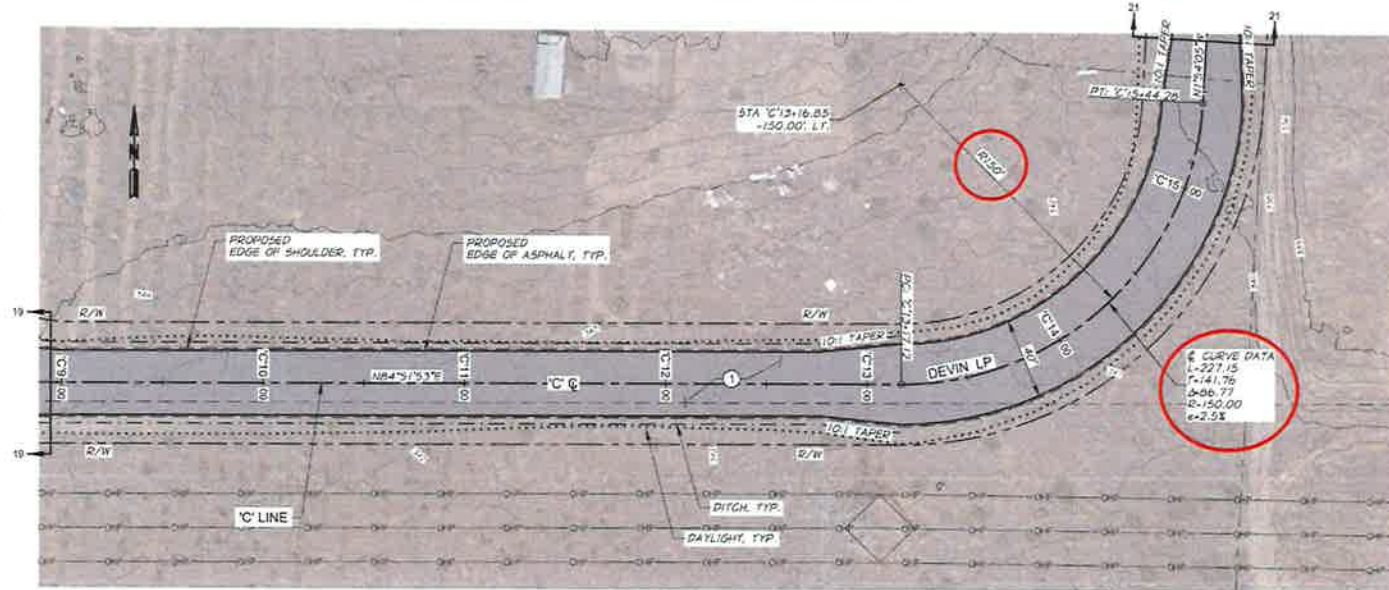
10 0 10 20 30
VERT. SCALE IN FEET

anderson perry & associates, inc.
Engineering • Surveying • Civil Services

CITY OF BOARDMAN LAUREL LANE AND LOOP ROAD IMPROVEMENTS	SHEET 19
ROADWAY "C" LINE - STA. C+1+35 TO STA. C+9+00	

WORK ITEM SCHEDULE

1. CONSTRUCT ROADWAY
SEE TYPICAL SECTION, SHEET 23
2. RELOCATE IRRIGATION JUNCTION BOX/VALVE
AS DIRECTED BY THE ENGINEER.
3. ADJUST EXISTING VALVE BOX TO GRADE AND
INSTALL CONCRETE VALVE COLLAR
SEE CITY STANDARD DETAIL W5
4. RELOCATE EXISTING AIR RELIEF VALVE
AS DIRECTED BY THE ENGINEER
SEE CITY STANDARD DETAIL W10
5. RELOCATE EXISTING FIRE HYDRANT
AS DIRECTED BY THE ENGINEER
SEE CITY STANDARD DETAIL W6
6. RELOCATE LIGHT POLE
AS DIRECTED BY THE ENGINEER.
7. INSTALL CONCRETE COLLAR
SEE CITY STANDARD DETAIL 55
8. CONSTRUCT DRIVEWAY APPROACH, LOCATION
AS DIRECTED BY THE ENGINEER.
SEE DETAIL, SHEET 27
9. ADJUST EXISTING UTILITY TO GRADE
10. PRESERVE AND PROTECT EXISTING UTILITY
11. EXISTING SURVEY MONUMENT
SEE THE GENERAL REQUIREMENTS FOR
INSTRUCTION.
12. REMOVE EXISTING SIGN AND POST
AND DELIVER TO OWNER
13. CONSTRUCT ISLAND
SEE SHEET 24 AND
OREGON STANDARD DRAWING RD705.
14. SAWCUT EXISTING ASPHALT



DESIGNED BY M. LEES	DATE 2021
DRAWN BY L. WILLHITE	DATE 2021
CHECKED BY A. LINDSEY	DATE 2021



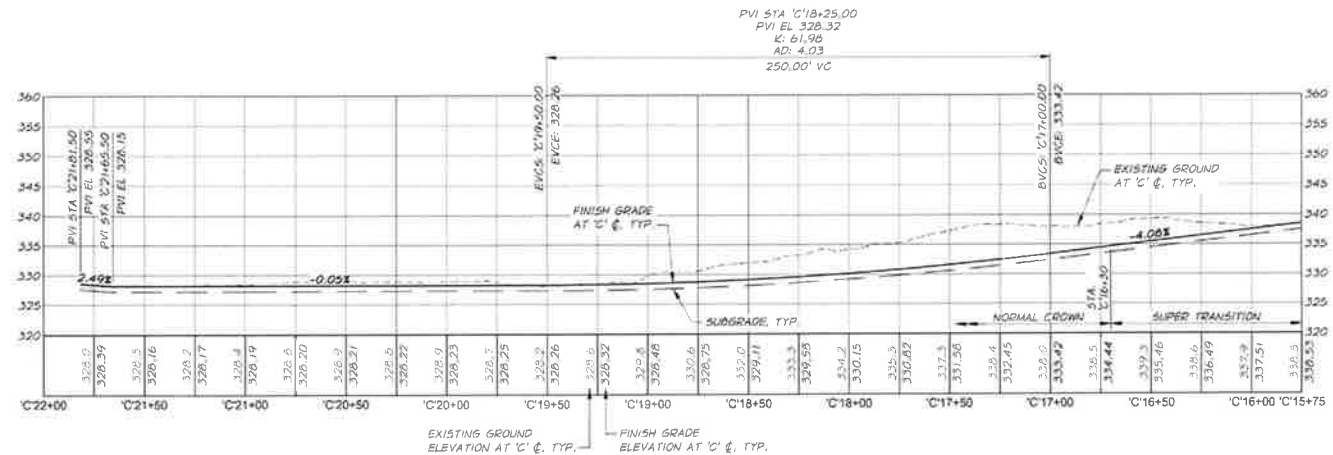
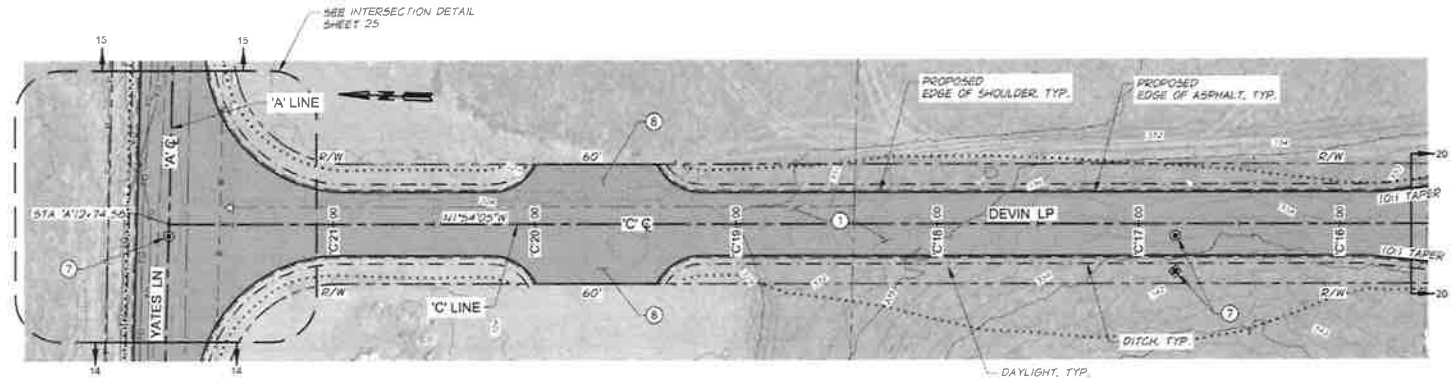
CITY OF BOARDMAN
LAUREL LANE AND LOOP ROAD IMPROVEMENTS

ROADWAY
'C' LINE - STA. C'9+00 TO STA. C'15+75

SHEET
20

WORK ITEM SCHEDULE

- 1 CONSTRUCT ROADWAY
SEE TYPICAL SECTION, SHEET 23
- 2 RELOCATE IRRIGATION JUNCTION BOX/VALVE
AS DIRECTED BY THE ENGINEER.
- 3 ADJUST EXISTING VALVE BOX TO GRADE AND
INSTALL CONCRETE VALVE COLLAR
SEE CITY STANDARD DETAIL W5
- 4 RELOCATE EXISTING AIR RELIEF VALVE
AS DIRECTED BY THE ENGINEER.
SEE CITY STANDARD DETAIL W10
- 5 RELOCATE EXISTING FIRE HYDRANT
AS DIRECTED BY THE ENGINEER.
SEE CITY STANDARD DETAIL W6
- 6 RELOCATE LIGHT POLE
AS DIRECTED BY THE ENGINEER.
- 7 INSTALL CONCRETE COLLAR
SEE CITY STANDARD DETAIL 55
- 8 CONSTRUCT DRIVEWAY APPROACH, LOCATION
AS DIRECTED BY THE ENGINEER.
SEE DETAIL, SHEET 27
- 9 ADJUST EXISTING UTILITY TO GRADE
- 10 PRESERVE AND PROTECT EXISTING UTILITY
- 11 EXISTING SURVEY MONUMENT
SEE THE GENERAL REQUIREMENTS FOR
INSTRUCTION.
- 12 REMOVE EXISTING SIGN AND POST
AND DELIVER TO OWNER
- 13 CONSTRUCT ISLAND
SEE SHEET 24 AND
OREGON STANDARD DRAWING RD705
- 14 SAWCUT EXISTING ASPHALT



DESIGNED BY: M. LEES	DATE: 2021
DRAWN BY: L. WHITE	DATE: 2021
CHECKED BY: A. LINDSEY	DATE: 2021

anderson
perry
& associates, inc.

CITY OF BOARDMAN
LAUREL LANE AND LOOP ROAD IMPROVEMENTS

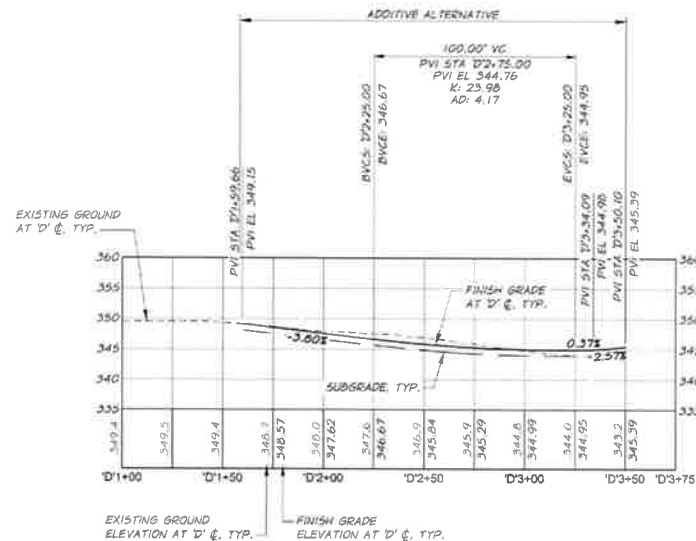
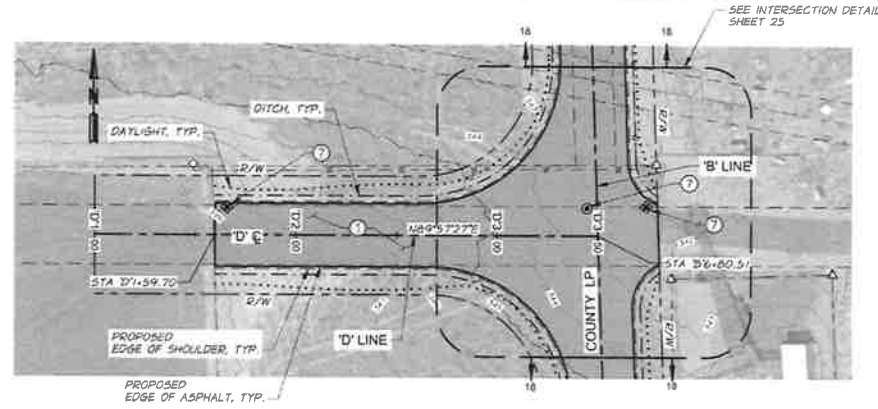
ROADWAY
'C' LINE - STA. 'C'15+75 TO STA. 'C'21+82

SHEET
21

WORK ITEM SCHEDULE

- 1 CONSTRUCT ROADWAY
SEE TYPICAL SECTION, SHEET 23
- 2 RELOCATE IRRIGATION JUNCTION BOX/VALVE
AS DIRECTED BY THE ENGINEER.
- 3 ADJUST EXISTING VALVE BOX TO GRADE AND
INSTALL CONCRETE VALVE COLLAR
SEE CITY STANDARD DETAIL W5
- 4 RELOCATE EXISTING AIR RELIEF VALVE
AS DIRECTED BY THE ENGINEER.
SEE CITY STANDARD DETAIL W10
- 5 RELOCATE EXISTING FIRE HYDRANT
AS DIRECTED BY THE ENGINEER.
SEE CITY STANDARD DETAIL W6
- 6 RELOCATE LIGHT POLE
AS DIRECTED BY THE ENGINEER.
- 7 INSTALL CONCRETE COLLAR
SEE CITY STANDARD DETAIL 55
- 8 CONSTRUCT DRIVEWAY APPROACH, LOCATION
AS DIRECTED BY THE ENGINEER.
SEE DETAIL, SHEET 27
- 9 ADJUST EXISTING UTILITY TO GRADE
- 10 PRESERVE AND PROTECT EXISTING UTILITY
- 11 EXISTING SURVEY MONUMENT
SEE THE GENERAL REQUIREMENTS FOR
INSTRUCTION.
- 12 REMOVE EXISTING SIGN AND POST
AND DELIVER TO OWNER
- 13 CONSTRUCT ISLAND
SEE SHEET 24 AND
OREGON STANDARD DRAWING RD705
- 14 SAWCUT EXISTING ASPHALT

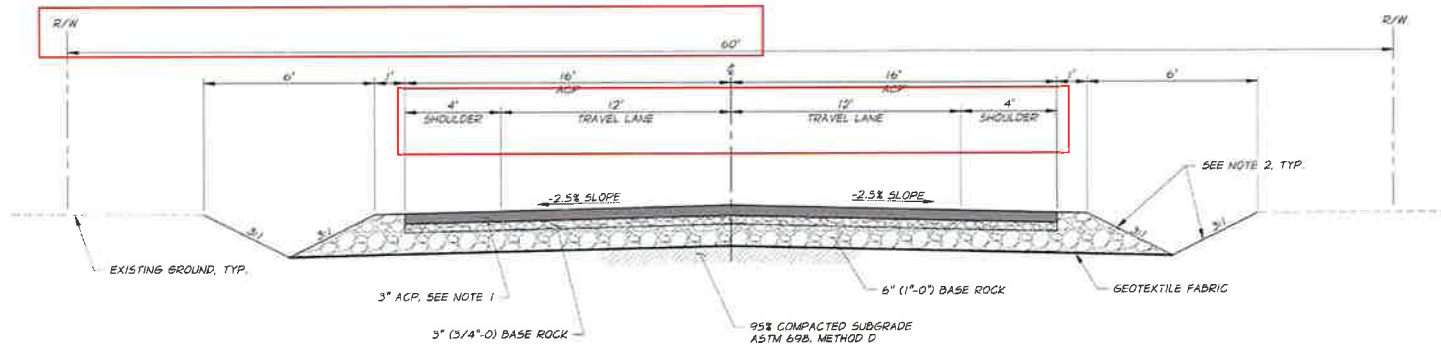
CONTRACTOR TO INCLUDE
HIGHLIGHTED WORK ITEMS
IN ADDITIVE ALTERNATIVE.



DESIGNED BY: M. LEES	DATE: 4/23/2021
DRAWN BY: L. WILLHITE	DATE: 4/23/2021
CHECKED BY: A. LINDSEY	DATE: 4/23/2021

anderson perry & associates, inc.
engineering • surveying • natural resources

CITY OF BOARDMAN LAUREL LANE AND LOOP ROAD IMPROVEMENTS	SHEET 22
ROADWAY D' LINE - STA. D' 1+60 TO STA. D' 3+50	



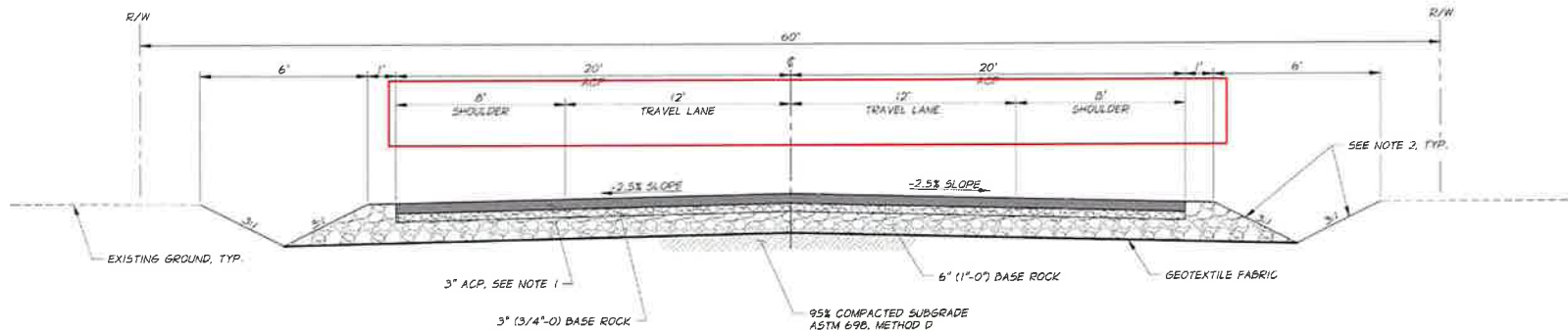
TYPICAL SECTION

STA 'A'0+60 TO STA 'A'9+65*
STA 'A'9+93 TO STA 'A'24+45
STA 'B'1+00 TO STA 'B'9+70*
STA 'C'1+35 TO STA 'C'7+83*
STA 'C'8+12 TO STA 'C'12+77
STA 'C'15+84 TO STA 'C'21+81
STA 'D'1+60 TO STA 'D'3+50*
N.T.S.

* DENOTES ADDITIVE ALTERNATIVE

NOTES

1. ASPHALT CONCRETE PAVEMENT SHALL BE CONSTRUCTED IN 1 LIFT.
2. SLOPES SHALL NOT EXCEED 3:1 UNLESS APPROVED BY THE ENGINEER.



TYPICAL SECTION

STA 'C'12+77 TO STA 'C'13+17 (TAPER)
STA 'C'13+17 TO STA 'C'15+44
STA 'C'15+44 TO STA 'C'15+84 (TAPER)
N.T.S.

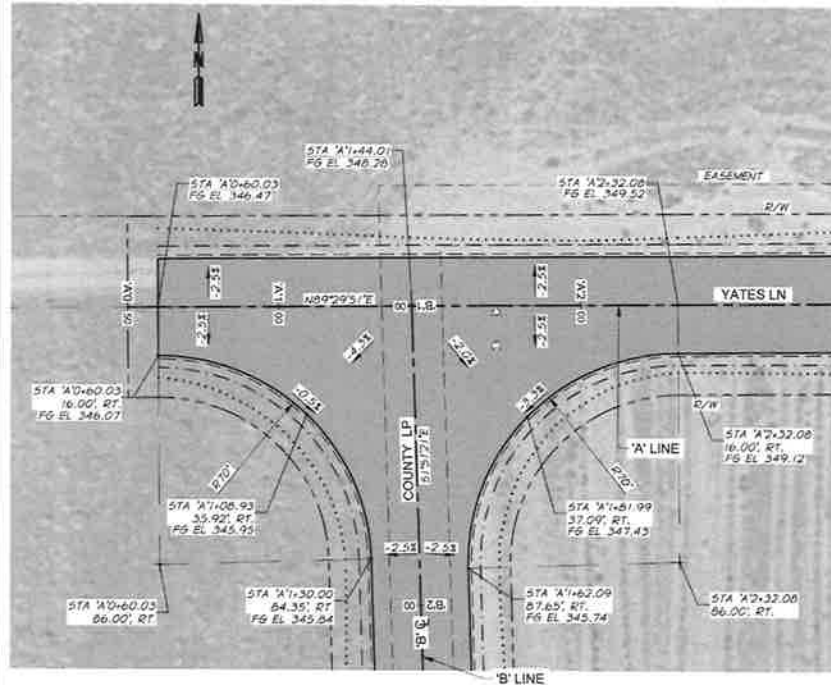


DESIGNED BY M. LEES	DATE 2021
CHECKED BY L. WILLHITE	DATE 2021
REVIEWED BY A. LINDSEY	DATE 2021

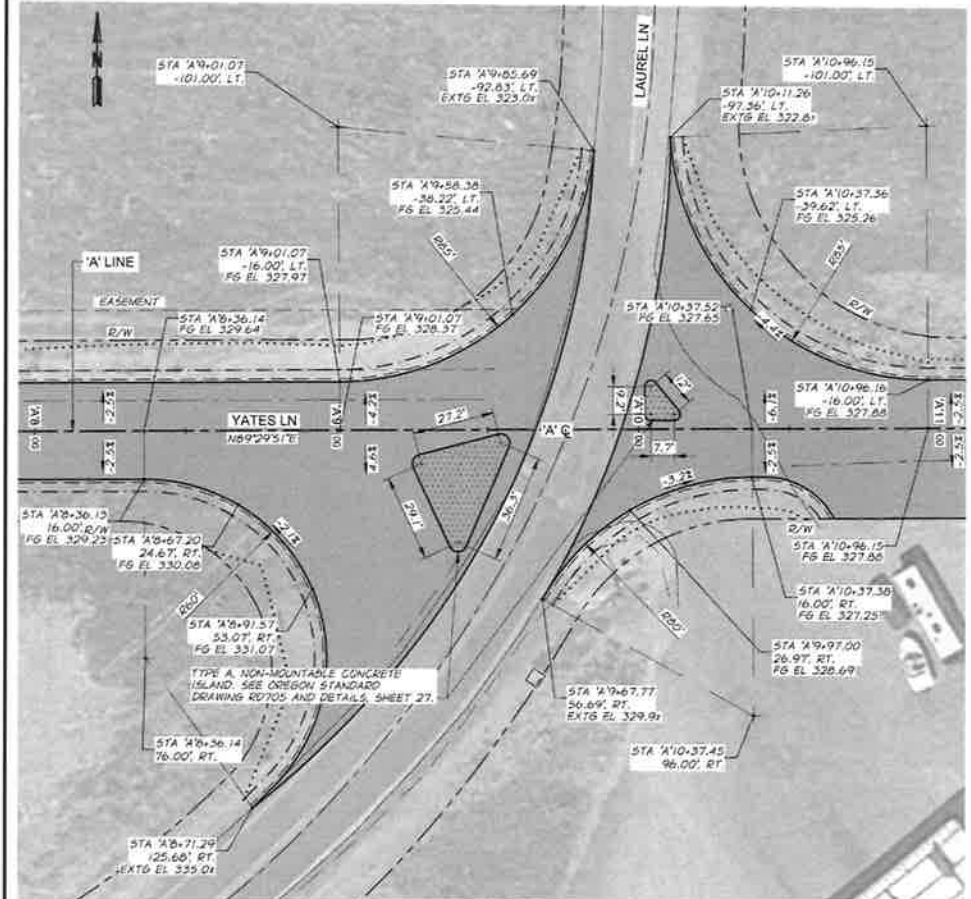


CITY OF BOARDMAN
LAUREL LANE AND LOOP ROAD IMPROVEMENTS
ROADWAY
TYPICAL SECTION

SHEET
23



INTERSECTION DETAIL
YATES LANE AND COUNTY LOOP



INTERSECTION DETAIL
YATES LANE AND LAUREL LANE



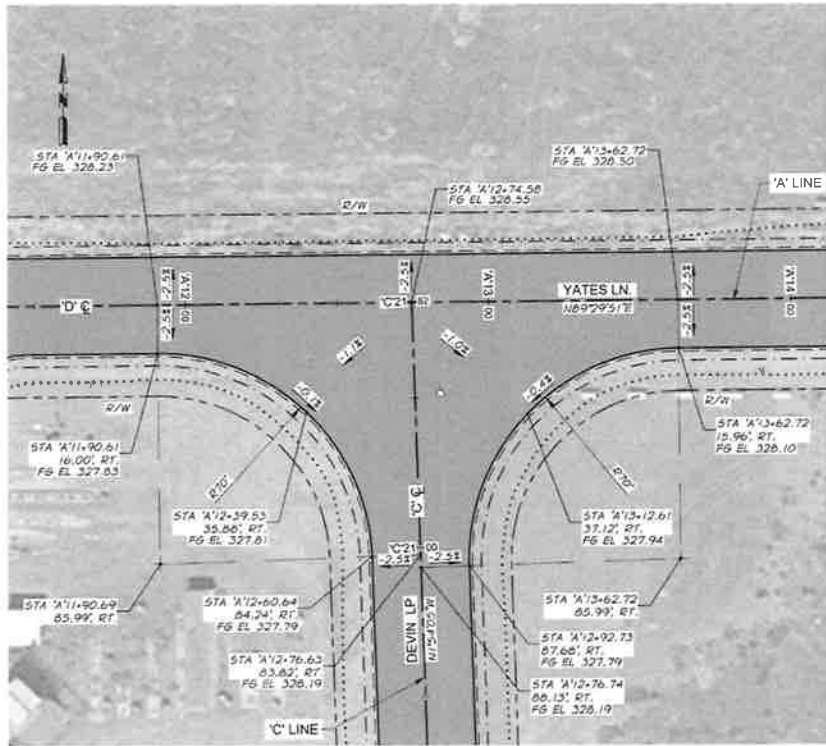
DESIGNED BY: M. LEES	CHECKED BY: L. WILLIAMS	DATE: 2021
DRAWN BY: A. LINDSEY	DATE: 2021	DATE: 2021
COPYRIGHT 2021 BY ANDERSON PERRY & ASSOC. INC.		



CITY OF BOARDMAN
LAUREL LANE AND LOOP ROAD IMPROVEMENTS

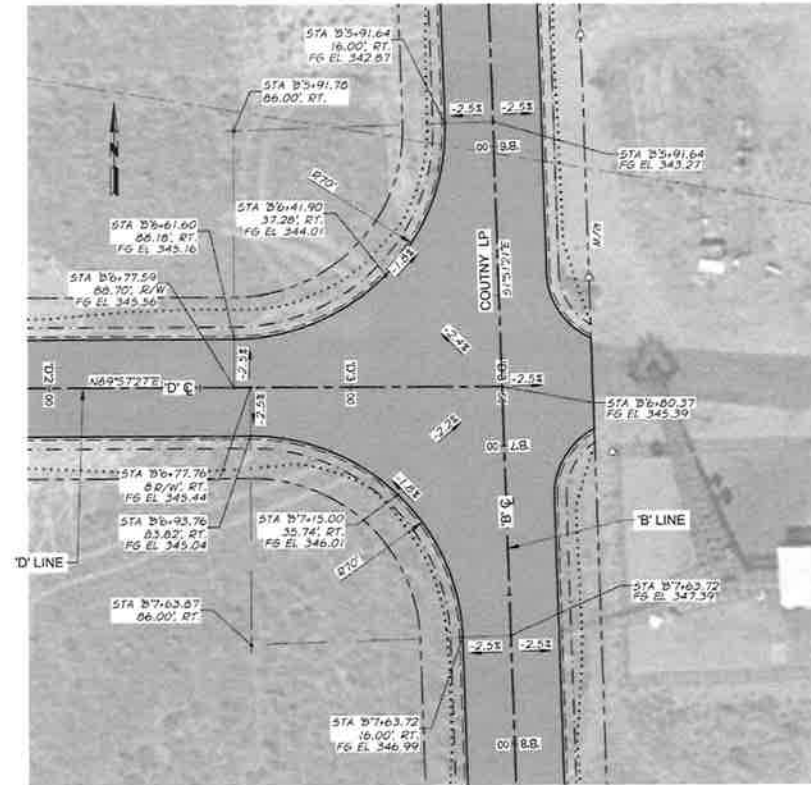
ROADWAY
INTERSECTION DETAILS I

SHEET
24



INTERSECTION DETAIL

YATES LANE AND DEVIN LOOP



INTERSECTION DETAIL
COUNTY LOOP AND 'D' LINE



				 HORIZ. SCALE IN FEET	
DESIGN		BY	DATE	JOB NUMBER 439-65/68 DATE 2021 H&M FILE 439-65-060C-432N7.dwg COPYRIGHT 2021 BY ANDERSON PERRY & ASSOC., INC.	
DRAWN BY	M. LEES				
CHECKED BY	L. WILLIAMS				
REVIEWED BY	A. LINDSEY				

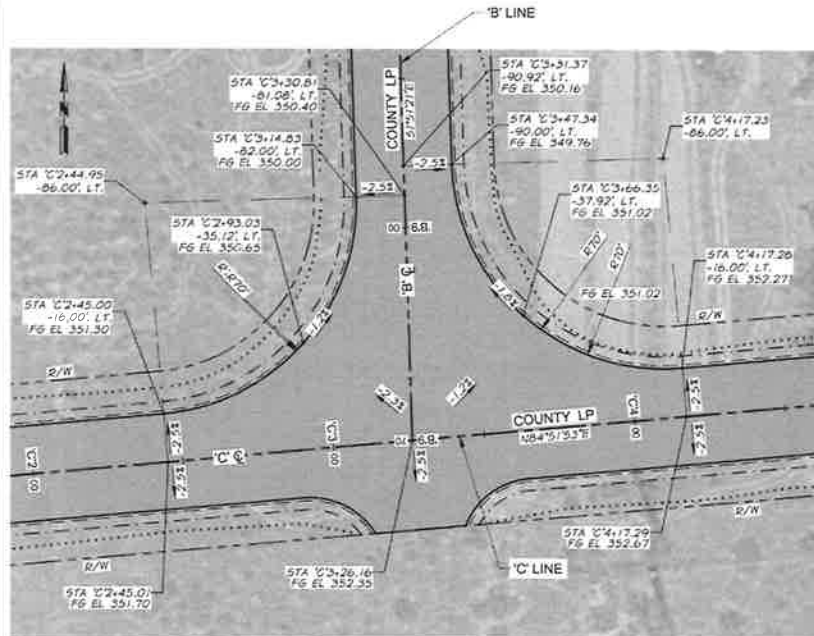


CITY OF BOARDMAN
LAUREL LANE AND LOOP ROAD IMPROVEMENTS

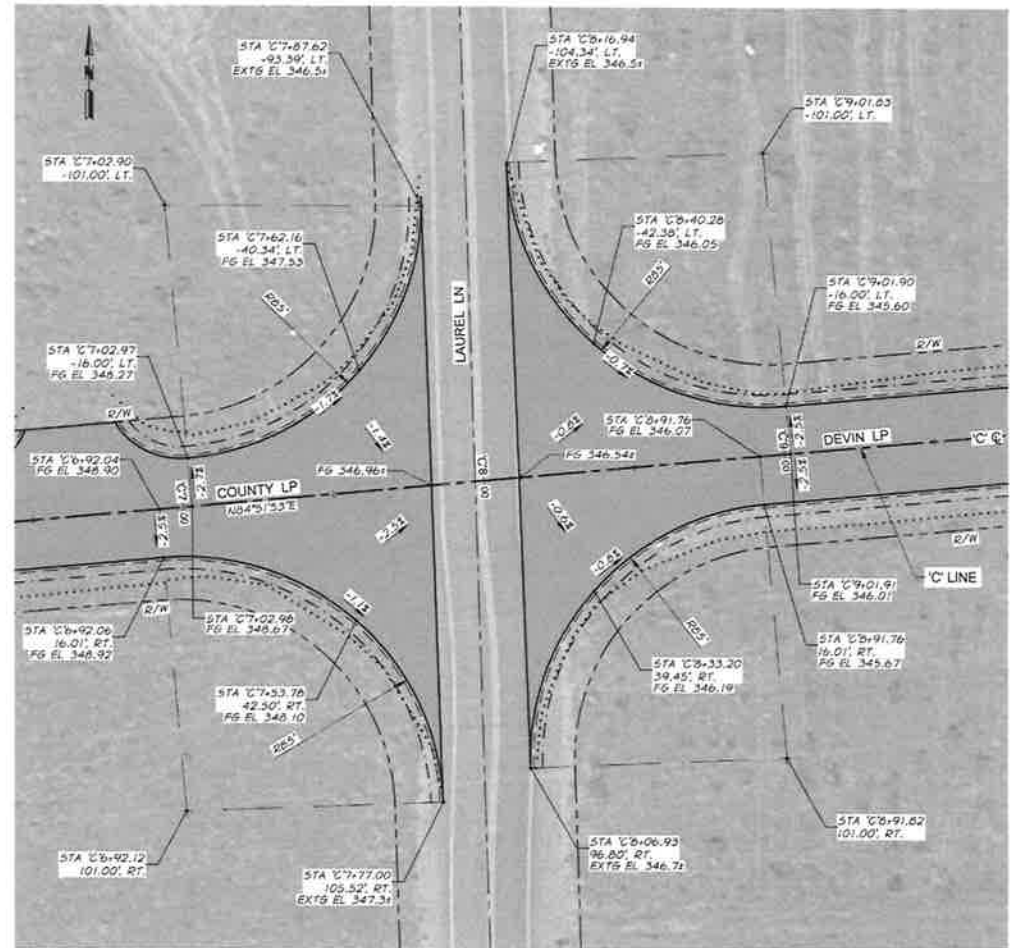
ROADWAY INTERSECTIONS DETAILS II

SHEET

25



INTERSECTION DETAIL
COUNTY LOOP



INTERSECTION DETAIL
LAUREL LANE AND COUNTY/DEVIN LOOP



DESIGNED BY	DATE	BY	DATE
BY	DATE	BY	DATE
BY	DATE	BY	DATE
BY	DATE	BY	DATE

HORIZ. SCALE: 1" = 40'

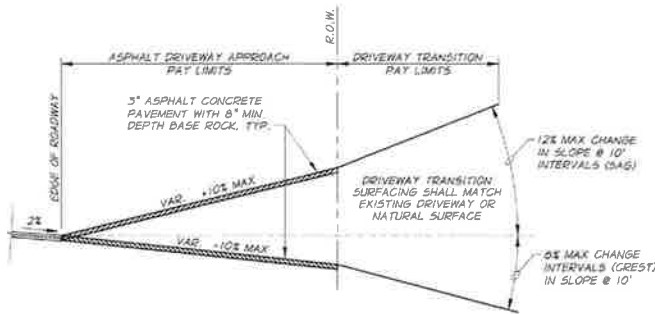
anderson
perry
& associates, inc.

CITY OF BOARDMAN
LAUREL LANE AND LOOP ROAD IMPROVEMENTS

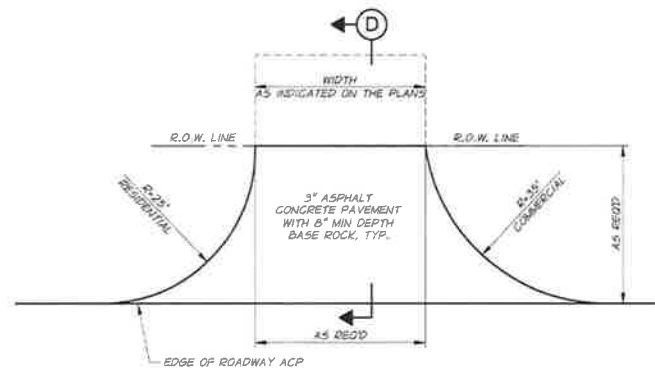
ROADWAY
INTERSECTION DETAILS III

26

C:\BOARDMAN\439-65-Laurel-Lane-WW&Devin-Loop-4033NT.dwg, Layout1, 1/11/2021 4:02 PM, extension

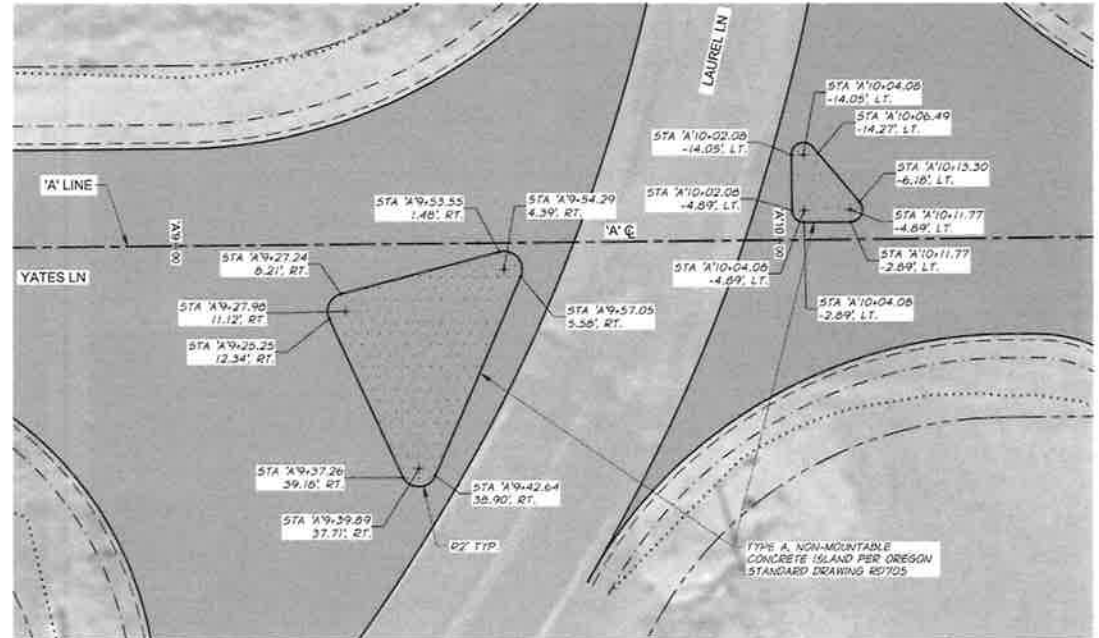


SECTION D



PLAN

ACP DRIVEWAY APPROACH
N.T.S.



CONCRETE ISLANDS DETAIL
YATES LANE AND LAUREL LANE



DESIGNED BY: M. LEAS	DATE: 2021
DRAWN BY: L. WILLIAMS	DATE: 2021
CHECKED BY: A. LINDSEY	DATE: 2021



CITY OF BOARDMAN
LAUREL LANE AND LOOP ROAD IMPROVEMENTS
ROADWAY
MISCELLANEOUS DETAILS

SHEET
27

STRIPING ITEMS

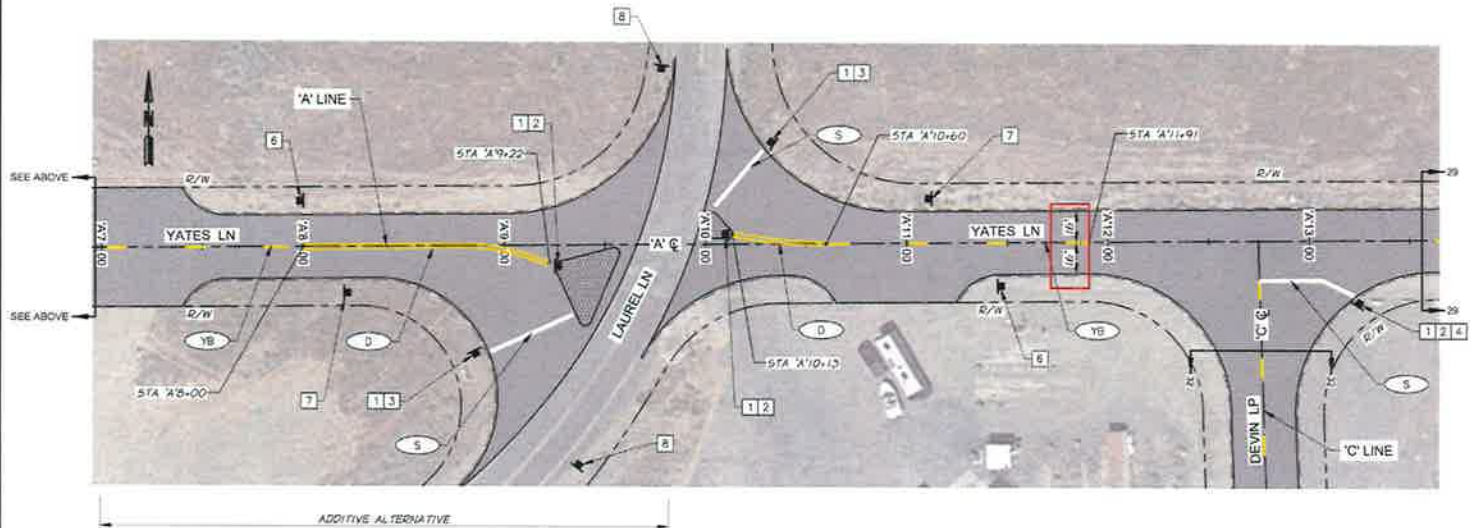
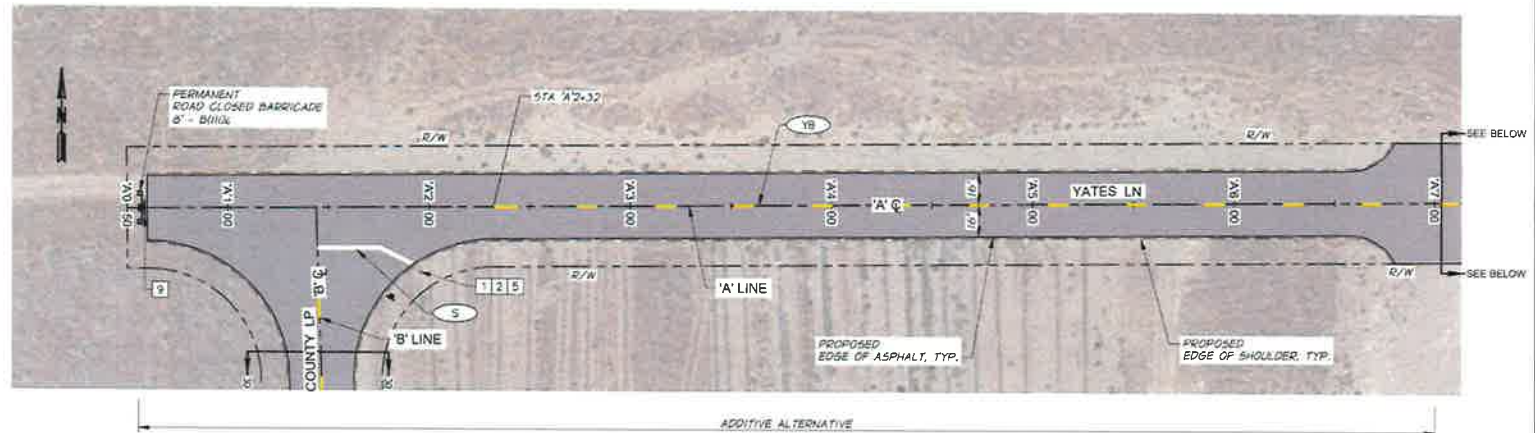
- YB 4" YELLOW BROKEN LINE
- S STOP BAR
1" WHITE BAR
- D DOUBLE NO-PASS
TWO 4" YELLOW LINES

NOTE:
SEE OREGON STD DWG TM500

SIGNING LEGEND

- 1 STOP R1-1
30"x30"
- 2 YATES LN. D3-1
VARIES x9"
- 3 LAUREL LN. D3-1
VARIES x9"
- 4 DEVIN LOOP D3-1
VARIES x9"
- 5 COUNTY LOOP D3-1
VARIES x9"
- 6 SPEED 25 R2-1
24"x30"
- 7 ONLY R3-5
30"x36"
- 8 R2-3
24"x24"
- 9 ROAD CLOSED TO THRU TRAFFIC R11-4
60"x30"

NOTES:
1. STREET NAME SIGNS COLOR TO BE GREEN
BACKGROUND WITH WHITE LETTERING.
2. SEE OREGON STD DWS TM200 AND SIGN
INSTALLATION DETAIL SHEET 32.



DESIGNED BY	M. LEES	CHECKED BY	L. WILLIAMS	DATE	2021
DRAWN BY	A. LINDSEY	DATE	2021		
PROJECT NO.	439-65-0600-1315TRP_A.dwg				



CITY OF BOARDMAN
LAUREL LANE AND LOOP ROAD IMPROVEMENTS

SIGNING AND STRIPING
'A' LINE - STA. A+0+00 TO STA. A+13+00

SHEET
28

STRIPING ITEMS

- (YB) 4" YELLOW BROKEN LINE
- (S) STOP BAR
1" WHITE BAR
- (D) DOUBLE NO-PASS
TWO 4" YELLOW LINES

NOTE:
SEE OREGON STD DWS TM200

SIGNING LEGEND

- 1 STOP R1-1
30"x30"
- 2 YATES LN. D3-1
VARIES x9"
- 3 LAUREL LN. D3-1
VARIES x9"
- 4 DEVIN LOOP D3-1
VARIES x9"
- 5 COUNTY LOOP D3-1
VARIES x9"
- 6 SPEED 25 R2-1
24"x30"
- 7 ONLY R3-5
30"x36"
- 8 R2-3
24"x24"
- 9 ROAD CLOSED TO THRU TRAFFIC R11-4
60"x30"

- NOTES:
1. STREET NAME SIGNS COLOR TO BE GREEN BACKGROUND WITH WHITE LETTERING.
 2. SEE OREGON STD DWS TM200 AND SIGN INSTALLATION DETAIL SHEET 32.



PROJECT		DATE	
DESIGNED BY	M. LEES	DATE	4/19/2021
CHECKED BY	L. WILLIAMS	DATE	4/19/2021
REVIEWED BY	A. LINDSEY	DATE	4/19/2021

0 30 60 90
HORIZ. SCALE IN FEET

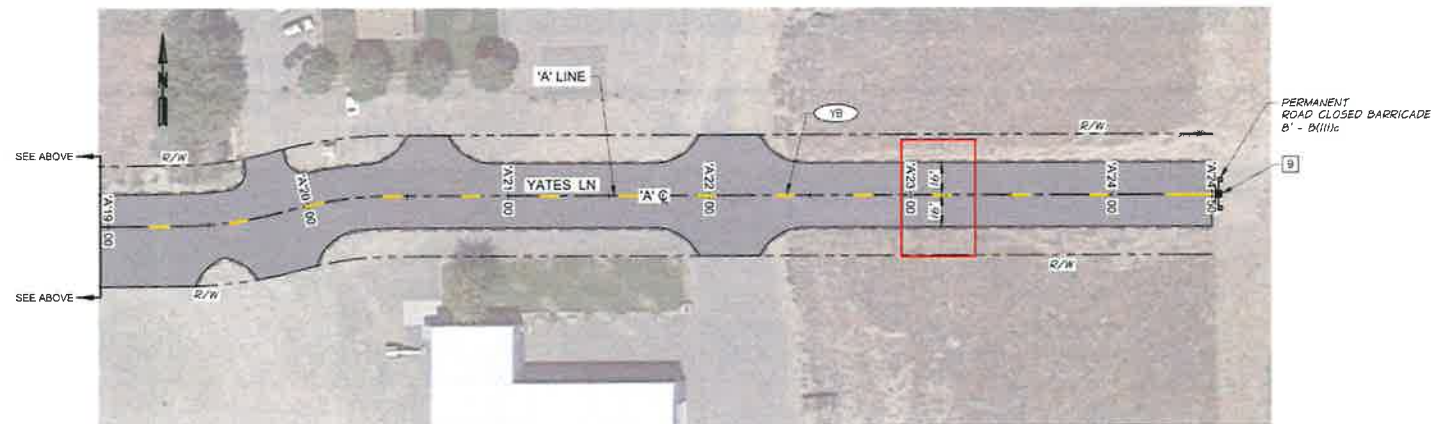
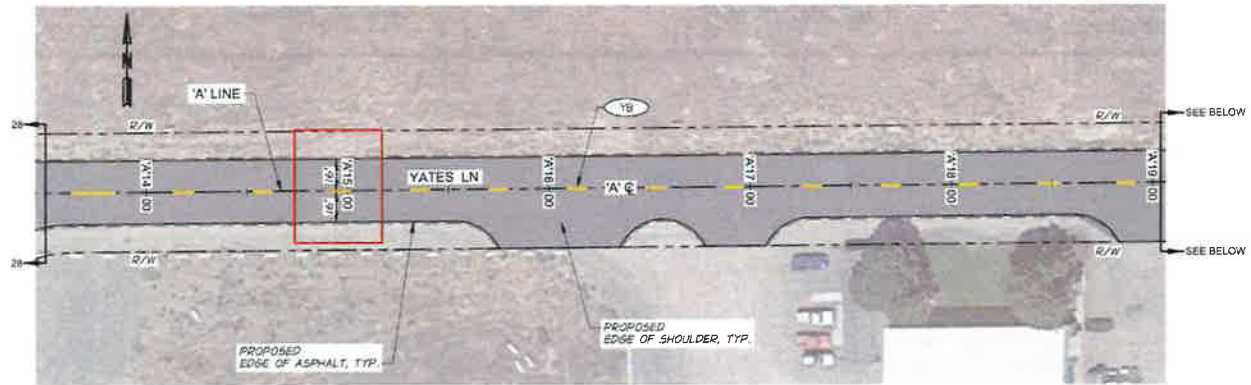
USE NUMBER 439-65/68 DATE 2021
H&M FILE 439-65-0600-132STRIP_A.dwg
COPYRIGHT 2021 BY ANDERSON PERRY & ASSOC., INC.



CITY OF BOARDMAN
LAUREL LANE AND LOOP ROAD IMPROVEMENTS

SIGNING AND STRIPING
'A' LINE - STA. 'A'13+50 TO STA. 'A'24+50

SHEET
29



STRIPING ITEMS

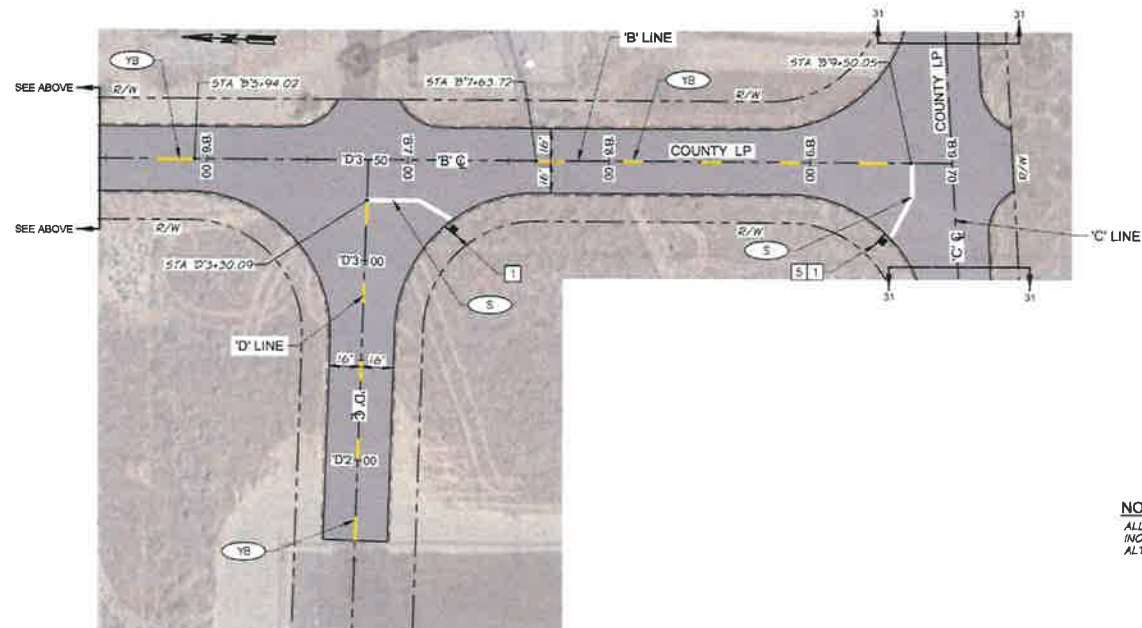
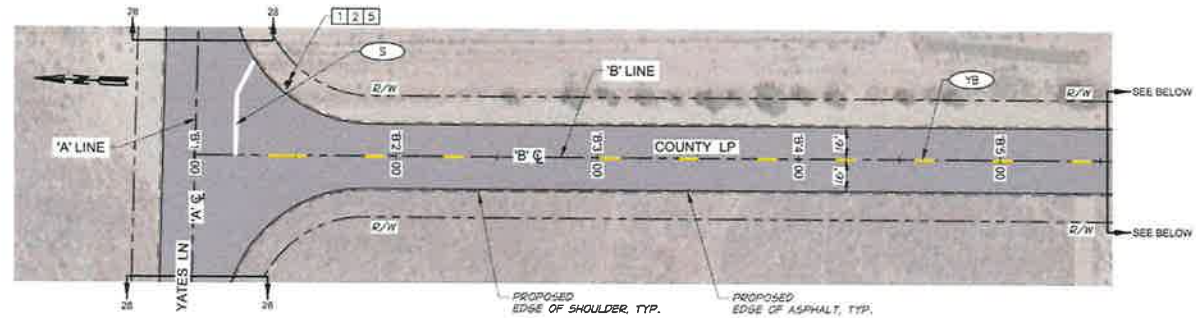
- YB 4" YELLOW BROKEN LINE
- S STOP BAR
1' WHITE BAR
- D DOUBLE NO-PASS
TWO 4" YELLOW LINES

NOTE:
SEE OREGON STD DWG TM500

SIGNING LEGEND

- 1 STOP R1-1
30"x30"
- 2 YATES LN. D3-1
VARIES x9"
- 3 LAUREL LN. D3-1
VARIES x9"
- 4 DEVIN LOOP D3-1
VARIES x9"
- 5 COUNTY LOOP D3-1
VARIES x9"
- 6 SPEED R2-1
24"x30"
- 7 ONLY R3-5
30"x36"
- 8 R2-3
24"x24"
- 9 ROAD CLOSED TO THRU TRAFFIC R11-4
60"x30"

- NOTES:
1. STREET NAME SIGNS COLOR TO BE GREEN BACKGROUND WITH WHITE LETTERING.
 2. SEE OREGON STD DWG TM200 AND SIGN INSTALLATION DETAIL SHEET 32.



NOTE
ALL ITEMS THIS SHEET
INCLUDED IN ADDITIVE
ALTERNATIVE.



DESIGNED BY	M. LEES	CHECKED BY	A. LINDSEY
DRAWN BY	L. WILLHITE	DATE	2021
PROJECT NO.	439-65-060C-1335TRP	DATE	2021
PROJECT NAME	LAUREL LANE AND LOOP ROAD IMPROVEMENTS	DATE	2021
PROJECT LOCATION	LAUREL LANE AND LOOP ROAD IMPROVEMENTS	DATE	2021
PROJECT DESCRIPTION	LAUREL LANE AND LOOP ROAD IMPROVEMENTS	DATE	2021

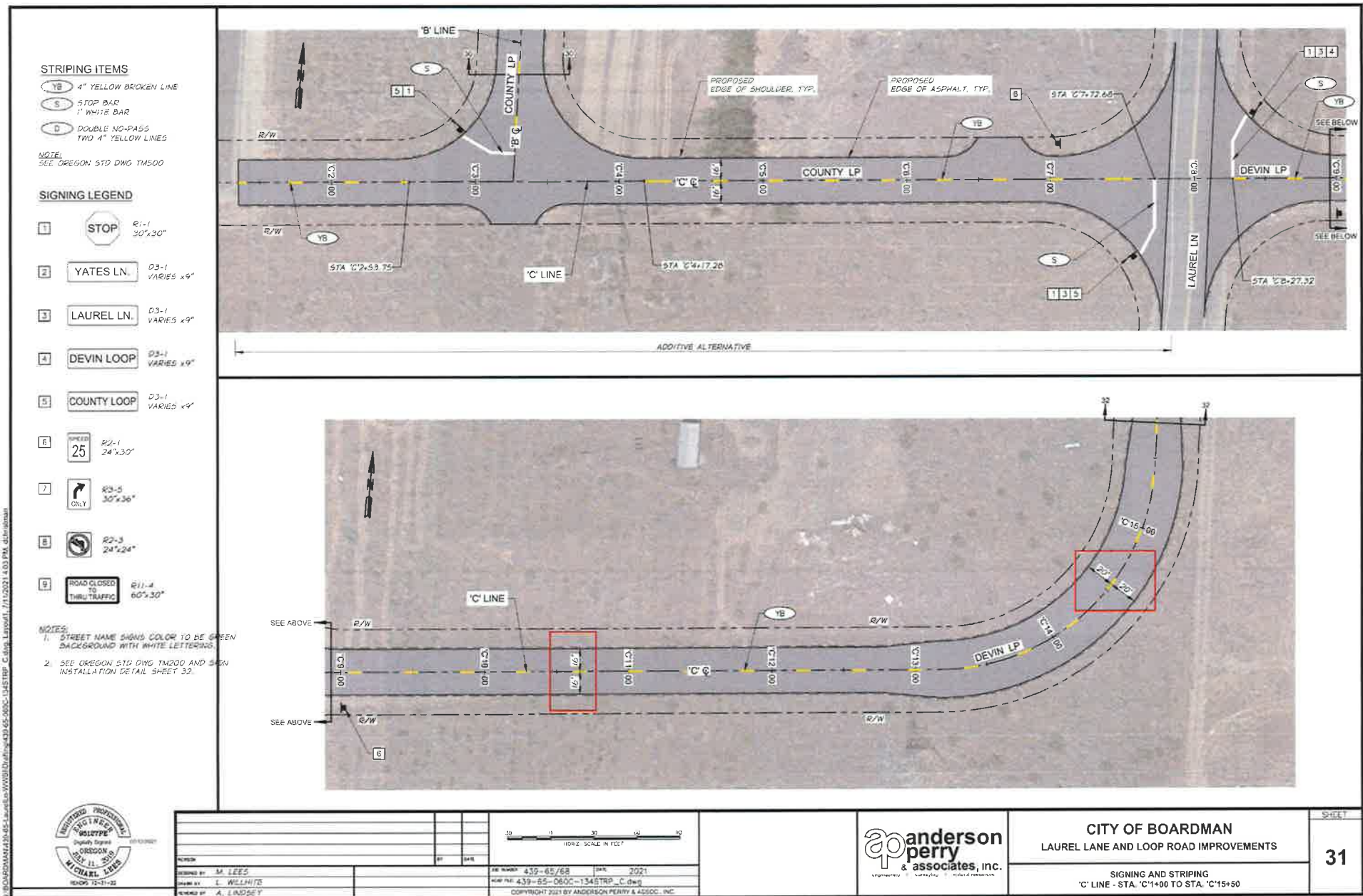
HORIZ. SCALE IN FEET
0 30 60

apanderson
perry
& associates, inc.

CITY OF BOARDMAN
LAUREL LANE AND LOOP ROAD IMPROVEMENTS

SIGNING AND STRIPING
'B' LINE - STA. 'B'1+00 TO STA. 'B'9+70
'D' LINE - STA. 'D'1+00 TO STA. 'D'3+60

SHEET
30



STRIPING ITEMS

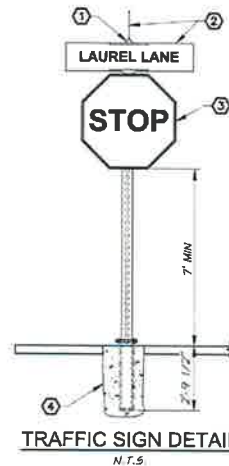
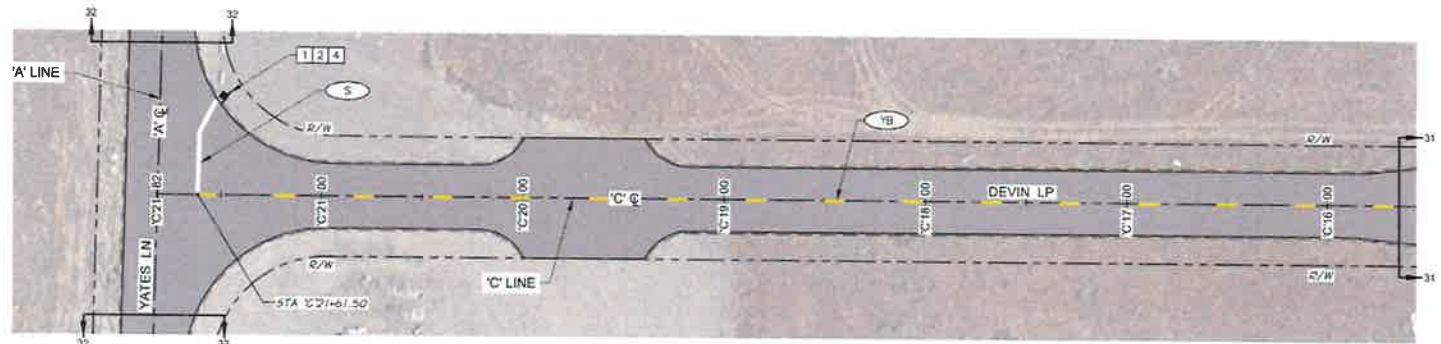
- YB 4" YELLOW BROKEN LINE
- S STOP BAR
1' WHITE BAR
- D DOUBLE NO-PASS
TWO 4" YELLOW LINES

NOTE:
SEE OREGON STD DWG TM500

SIGNING LEGEND

- 1 STOP R1-1
30"x30"
- 2 YATES LN. D3-1
VARIES x 9"
- 3 LAUREL LN. D3-1
VARIES x 9"
- 4 DEVIN LOOP D3-1
VARIES x 9"
- 5 COUNTY LOOP D3-1
VARIES x 9"
- 6 SPEED 25 R2-1
24"x30"
- 7 ONLY R3-5
30"x36"
- 8 R2-3
24"x24"
- 9 ROAD CLOSED TO THRU TRAFFIC R11-4
60"x30"

- NOTES:
1. STREET NAME SIGNS COLOR TO BE GREEN BACKGROUND WITH WHITE LETTERING.
 2. SEE OREGON STD DWG TM200 AND SIGN INSTALLATION DETAIL SHEET 32.



SIGN NOTES

1. STREET NAME SIGN BRACKET SHALL BE ZUMAR 90° CROSS BRACKET FOR EXTRUDED BLADE, OR APPROVED EQUAL.
2. STREET NAME SIGNS SHALL BE MUTCD SIGN NO. D3-1 (VARIES X 9" MIN.).
3. STOP SIGN SHALL BE MUTCD SIGN NO. R1-1 (30"x30").
4. SEE OREGON STANDARD DRAWING TM666 FOR FOUNDATION AND SLIP BASE REQUIREMENTS.

- NOTES:
1. STOP SIGN SHALL BE PLACED ON THE RIGHT SIDE OF THE ROADWAY, AS DIRECTED BY ENGINEER.
 2. ORIENT SIGNS TO BEST FIT FIELD CONDITIONS.
 3. SIGN SUPPORT SHALL BE PERFORATED STEEL SQUARE TUBE.



DESIGNED BY: M. LEES	DATE: 4/30/2021
DRAWN BY: L. WILSHIRE	DATE: 4/30/2021
CHECKED BY: A. LINDSEY	DATE: 4/30/2021
PROJECT: 439-65/68	
SHEET: 439-65/68-060C-135STRIP_C.dwg	
COPYRIGHT 2021 BY ANDERSON PERRY & ASSOC, INC.	



CITY OF BOARDMAN
LAUREL LANE AND LOOP ROAD IMPROVEMENTS

SIGNING AND STRIPING
'C' LINE - STA. 'C'16+80 TO STA. 'C'21+82

SHEET

32